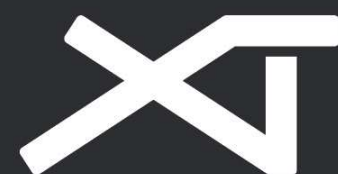
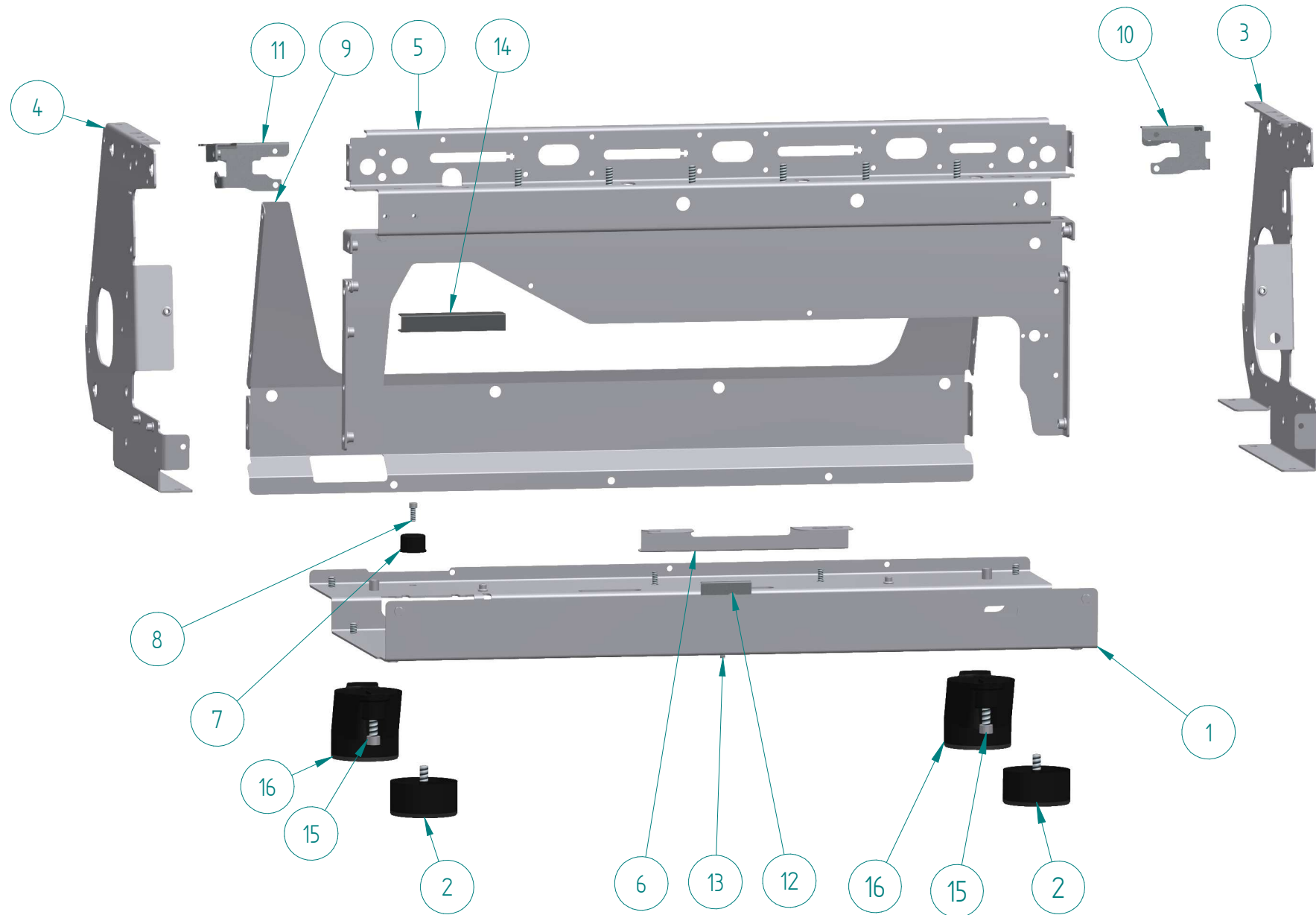


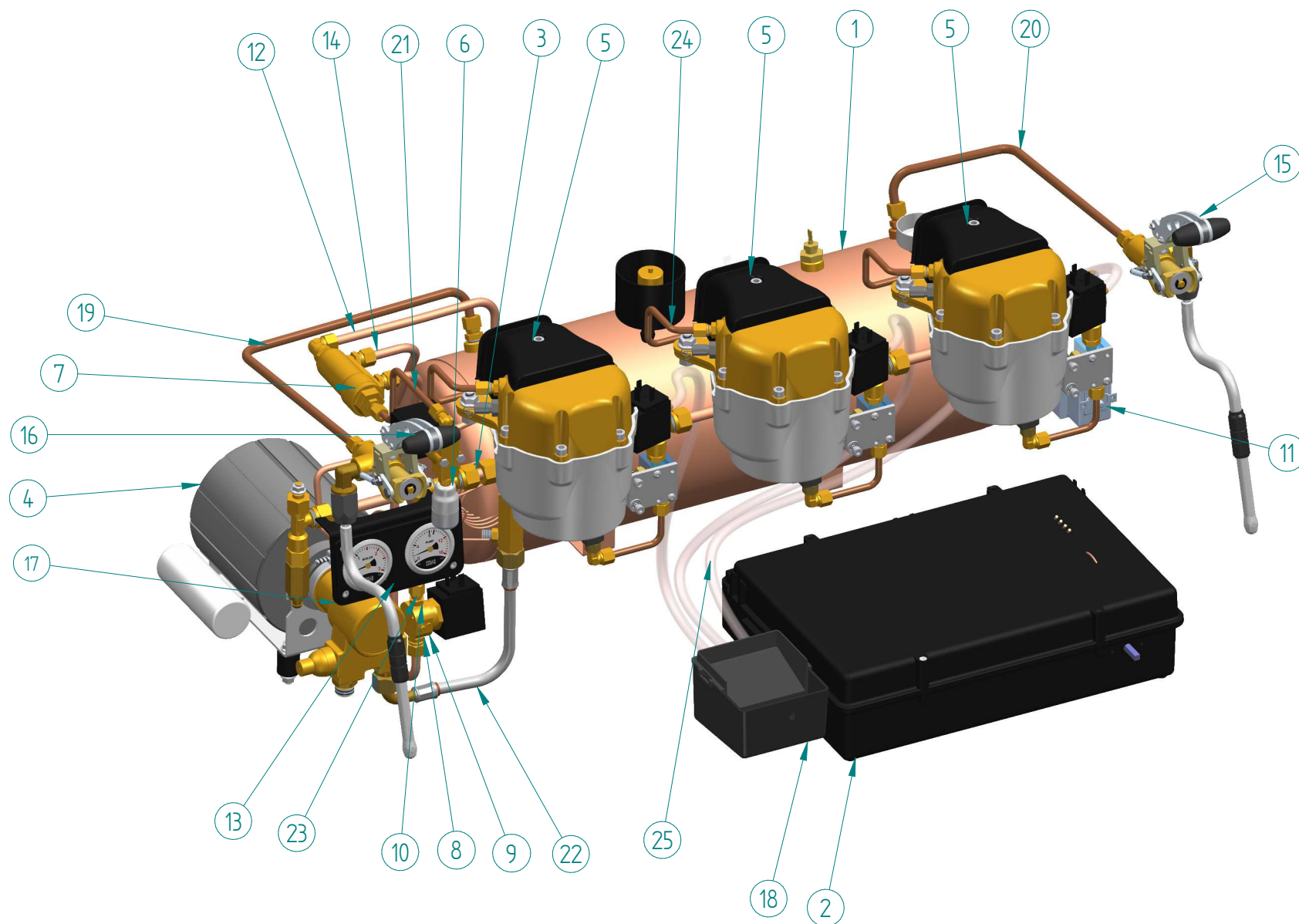
DALLA
CORTE

SPARE PARTS CATALOGUE



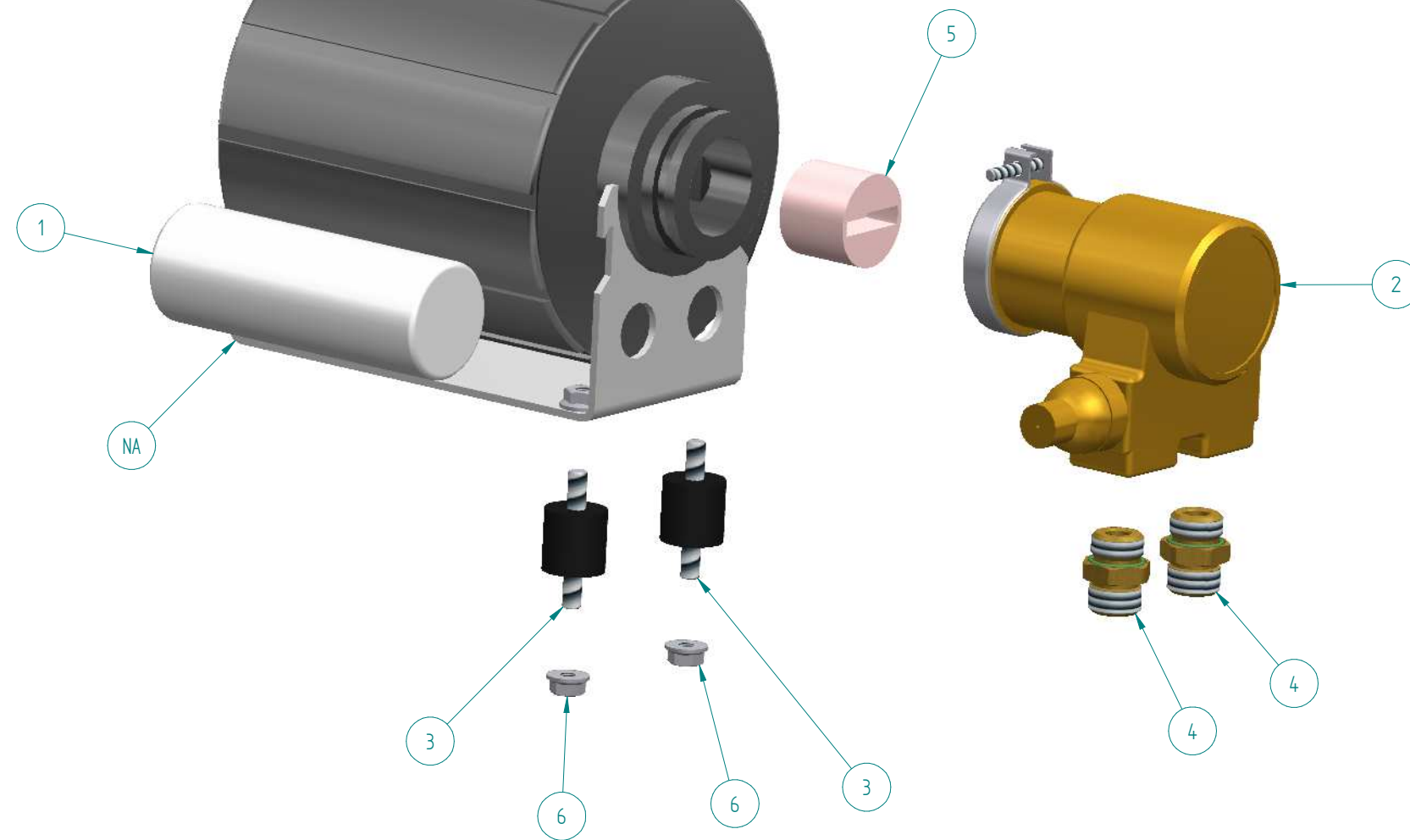


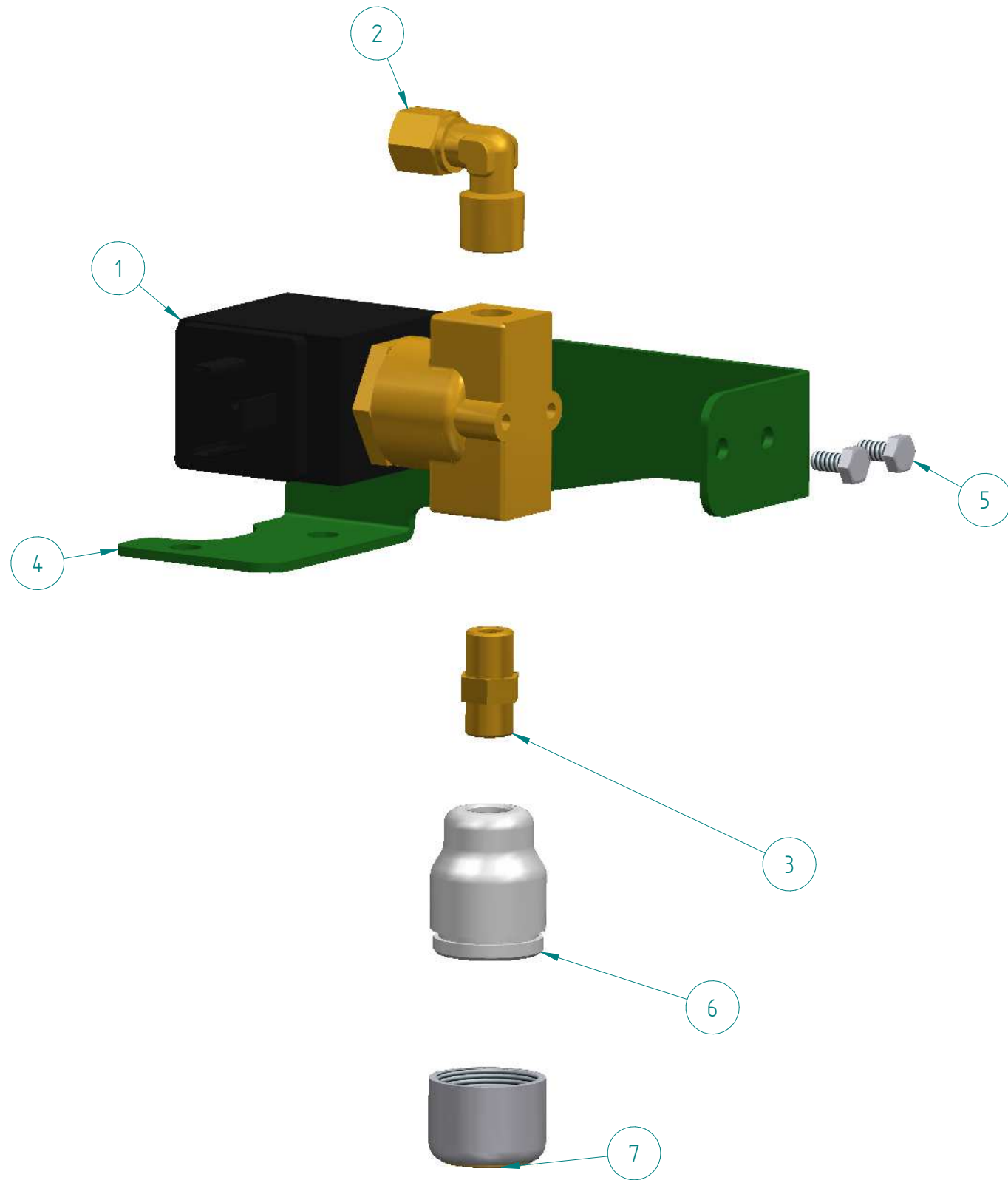
ITEM	CODE	DESCRIPTION	NOTE
	A-MC-1502	MACHINE FRAME 3GR	NOT ORDINABLE
	A-MC-1501 *	MACHINE FRAME 2GR	NOT ORDINABLE
1	B-MC-1080	BASE 3 GROUPS	NOT ORDINABLE
1a	B-MC-1079 *	BASE 2 GROUPS	NOT ORDINABLE
2	B-MC-1255	FOOT D80 H40	
2a	A-MC-1300 *	FOOT D80 H40 WHITE	
2b	A-MC-1513 *	FOOT D80 H40 DARK	
2c	A-MC-1540 *	FOOT D80 H80 DARK	
3	B-MC-1501	INNER SIDE RIGHT	NOT ORDINABLE
4	B-MC-1502	INNER SIDE LEFT	NOT ORDINABLE
5	B-MC-1504	CENTRAL CROSSPIECE 3 GROUPS	NOT ORDINABLE
5a	B-MC-1503 *	CENTRAL CROSSPIECE 2 GROUPS	NOT ORDINABLE
6	B-MC-1123	BOILER SUPPORT	
7	B-MC-0187	RUBBER ANTIVIBRATION H20 SH50	
8	B-00-0109	SCREW TCEI A2 M6x16 DIN912	
9	B-MC-1270	REAR OPEN CROSSPIECE 3GR	
9a	B-MC-1328 *	REAR OPEN CROSSPIECE 2GR	
10	B-MC-1505	RIGHT TAP SUPPORT	
11	B-MC-1506	LEFT TAP SUPPORT	
12	B-MC-0670	DRAIN BOX BRACKET	
13	B-00-0107	SCREW TE 8.8 M6x10 DIN933	
14	B-MC-1507	PRESSURE GAUGE SUPPORT ADAPTER	
15	B-00-0358	SCREW A2 M10x40 DIN912	
16	A-MC-1510D	REAR FOOT DARK	
16a	A-MC-1510W *	REAR FOOT WHITE	



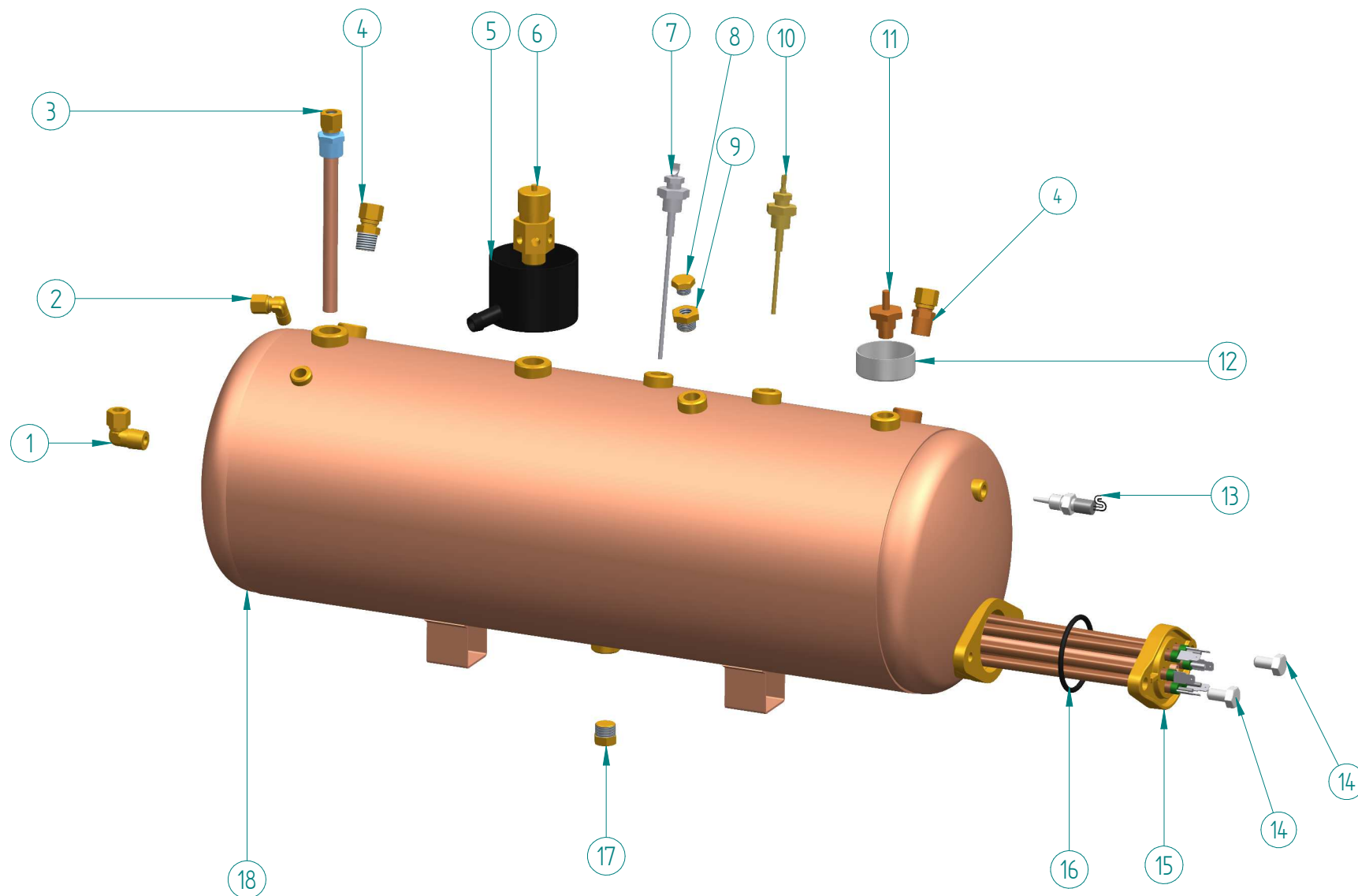
ITEM	CODE	DESCRIPTION	NOTE
1	A-MC-1007	COMPLETE BOILER 13L	See sheet 07
1a	A-MC-1006 *	COMPLETE BOILER 7L	See sheet 07
2	A-MC-1515	ELECTRICAL SYSTEM 3GR	See sheet 16
2a	A-MC-1514 *	ELECTRICAL SYSTEM 2GR	See sheet 16
3	A-MC-1523	COMPLETE MANIFOLD 3GR	See sheet 08
3a	A-MC-1522 *	COMPLETE MANIFOLD 2GR	See sheet 08
4	A-MC-0024TF	MOTOR CLAMP-RING PUMP 165W + PIPE FLEX	See sheet 05
5	A-MC-1008GZ	RAW ASSEMBLED GROUPHEAD	See sheet 14
6	A-MC-1526	HOT WATER GROUP	See sheet 06
7	A-MC-1532	COMPLETE EXCHANGER	See sheet 10
8	B-00-0101A	STRAIGHT COUPLING 1/8" D8	
9	B-00-0026	SOLENOID VALVE 2-WAY+RF 24V D2V	
10	B-00-0012A	STRAIGHT COUPLING 1/8" D6	
11	B-00-0023	SAFETY THERMOSTAT 3F 25A	
12	B-MC-1108	SUCTION - EXCHANGE PIPE	
13	B-MC-1118	EVC - EXCHANGER PIPE	
14	B-MC-1120	EXCHANGER - BOILER PIPE	
15	A-MC-1509	LEVER STEAM TAP ASSEMBLY RIGHT	See sheet 12
16	A-MC-1508	LEVER STEAM TAP ASSEMBLY LEFT	See sheet 12
17	A-MC-0511D	PRESSURE GAUGE ASSEMBLY DARK	See sheet 11
17a	A-MC-0511W *	PRESSURE GAUGE ASSEMBLY WHITE	See sheet 11
18	B-MC-0017	DRAIN BOX	
19	B-MC-1526	STEAM PIPE LEFT	
20	B-MC-1525	STEAM PIPE RIGHT	
21	B-MC-1524	PIPE OF EXCHANGER AND EVS	
22	B-00-0360	FLEX PIPE 3/8" L22,5	
23	B-MC-1569	MANIFOLD - EVC PIPE	
24	B-MC-1527	GROUP FEED PIPE	
25	B-00-0325	TRANSPARENT SILICONE PIPE 6x10	

ITEM	CODE	DESCRIPTION	NOTE
	A-MC-0024TF	MOTOR CLAMP-RING PUMP 165W + PIPE FLEX	
1	B-00-0208	MOTOR 165 W 230 V50/60HZ CL. F	
2	B-00-0009	PUMPING UNIT 100L	
3	B-00-0011	ANTIVIBRATION 20X20 M6X10 40SH	
4	B-00-0278A	NIPPLE 3/8" FOR PUMPING ELEMENT	
5	B-00-0010	PUMPING UNIT COUPLING - NYLON	
6	B-00-0113	FLANGED NUT M6 DIN6923	





ITEM	CODE	DESCRIPTION	NOTE
	A-MC-1526	HOT WATER GROUP	
1	B-00-0313	SOLENOID VALVE 2-WAY 24V D3V	
2	B-00-0014A	FITTING "L" 1/4" D6	
3	B-00-0179A	CONICAL NIPPLE 1/8" MM	
4	B-MC-1508	SOLENOID VALVE SUPPORT	
5	B-00-0102	SCREW TE 8.8 M4x8 DIN933	
6	B-MC-0052	TEA TERMINAL COUPLING	
7	B-MC-0076	COMPLETE WATER DRAIN TERMINAL	



ITEM	CODE	DESCRIPTION	NOTE
	A-MC-1007	COMPLETE BOILER 13L	
	A-MC-1006 *	COMPLETE BOILER 7L	
1	B-00-0177A	L-COUPLING 1/4" D8	
2	B-00-0130A	L-COUPLING 237 D6 1/8"	
3	B-MC-0070	COMPLETE SUCTION PIPE	
4	B-00-0015A	STRAIGHT COUPLING 1/4" D8	
5	B-MC-0208	SAFETY VALVE D 17 DRAIN BOX	
6	B-MC-0048	SAFETY VALVE 3/8" 1.5 BAR	
7	B-MC-0049A	LEVEL PROBE L135	
8	B-00-0246A	PLUG 1/8" M	
9	B-00-0171A	REDUCTION MF 1/4" - 1/8"	
10	B-MC-0158A	LEVEL PROBE L95	
11	B-MC-0047	VACUUM VALVE 1/4"	
12	B-MC-0209	DRAIN BOX VACUUM VALVE	
13	B-MC-1132	TEMPERATURE PROBE PT1000 1/8"	
14	B-00-0112	SCREW TE A2 M8X20 DIN933	
15	B-MC-0144	BOILER RESISTANCE 3500W-230V	
15a	B-MC-0029 *	BOILER RESISTANCE 2400W-230V	
15b	B-MC-0229 *	BOILER RESISTANCE 4500W-230V	
16	B-00-0039	OR 150 46,04x3,53	
17	B-00-0181A	PLUG 1/4" M	
18	B-MC-0156	BOILER 13L	
18a	B-MC-0032 *	BOILER 7L	

DALLA CORTE
CATALOGO RICAMBI
DC PRO XT

DESCRIZIONE
COMPLETE BOILER

CODICE ASSIEME

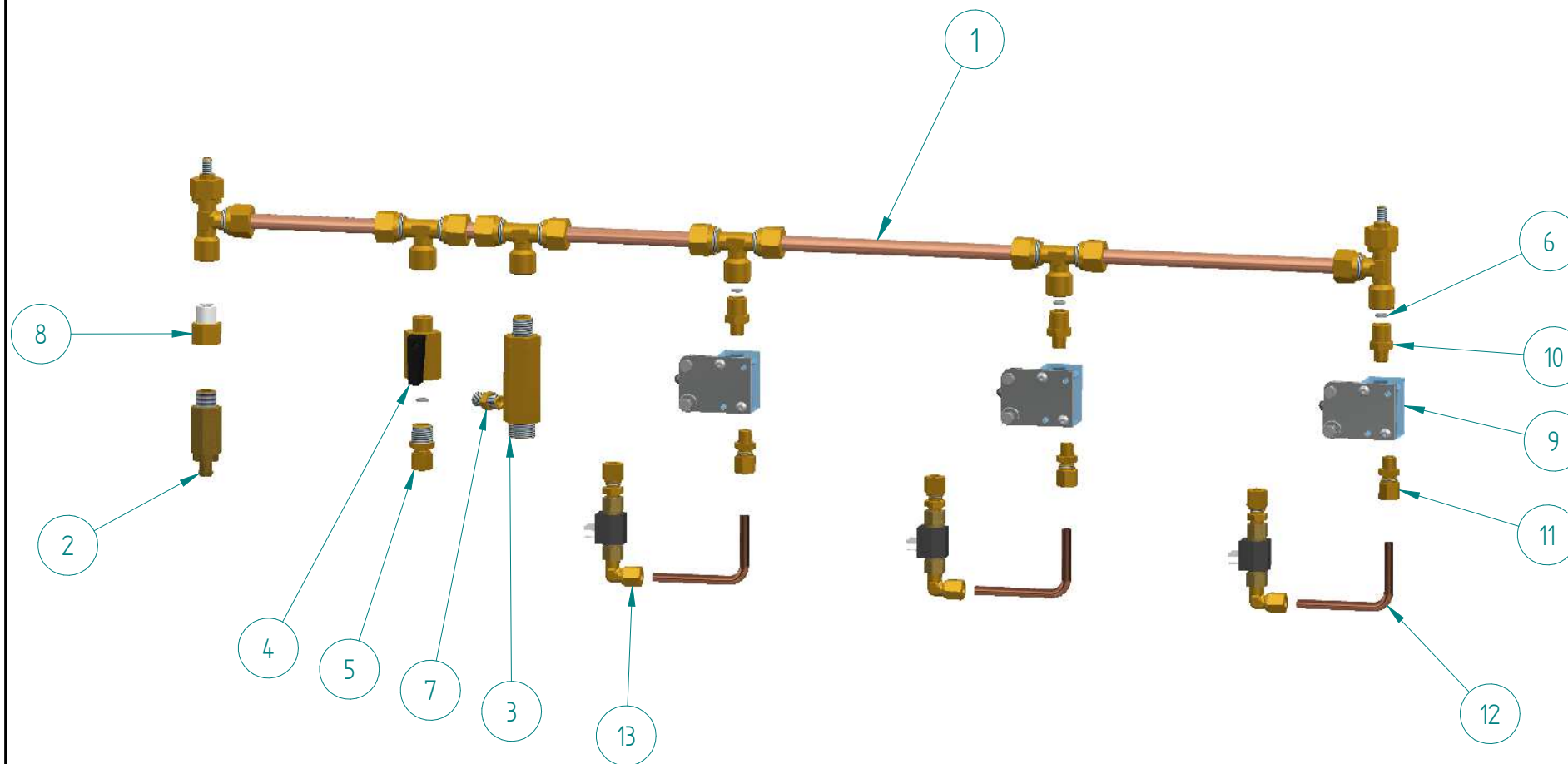
REV
00

DATA DI EMISSIONE
07/2018

NOTE:

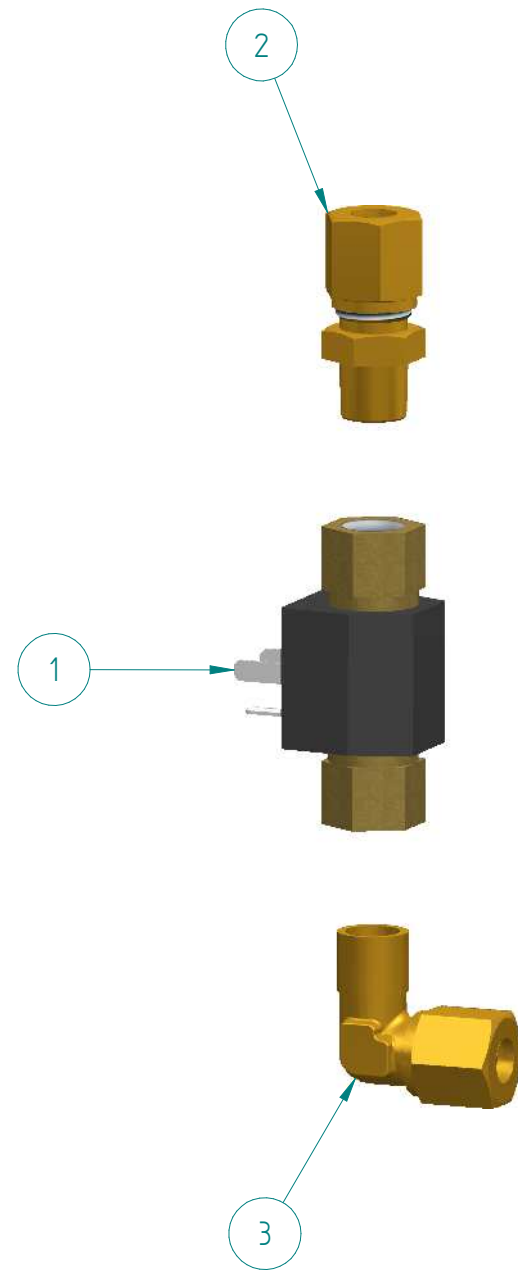
* ALTERNATIVA AL COMPONENTE RAPPRESENTATO
** COMPONENTE NON RAPPRESENTATO

FOGLIO
7

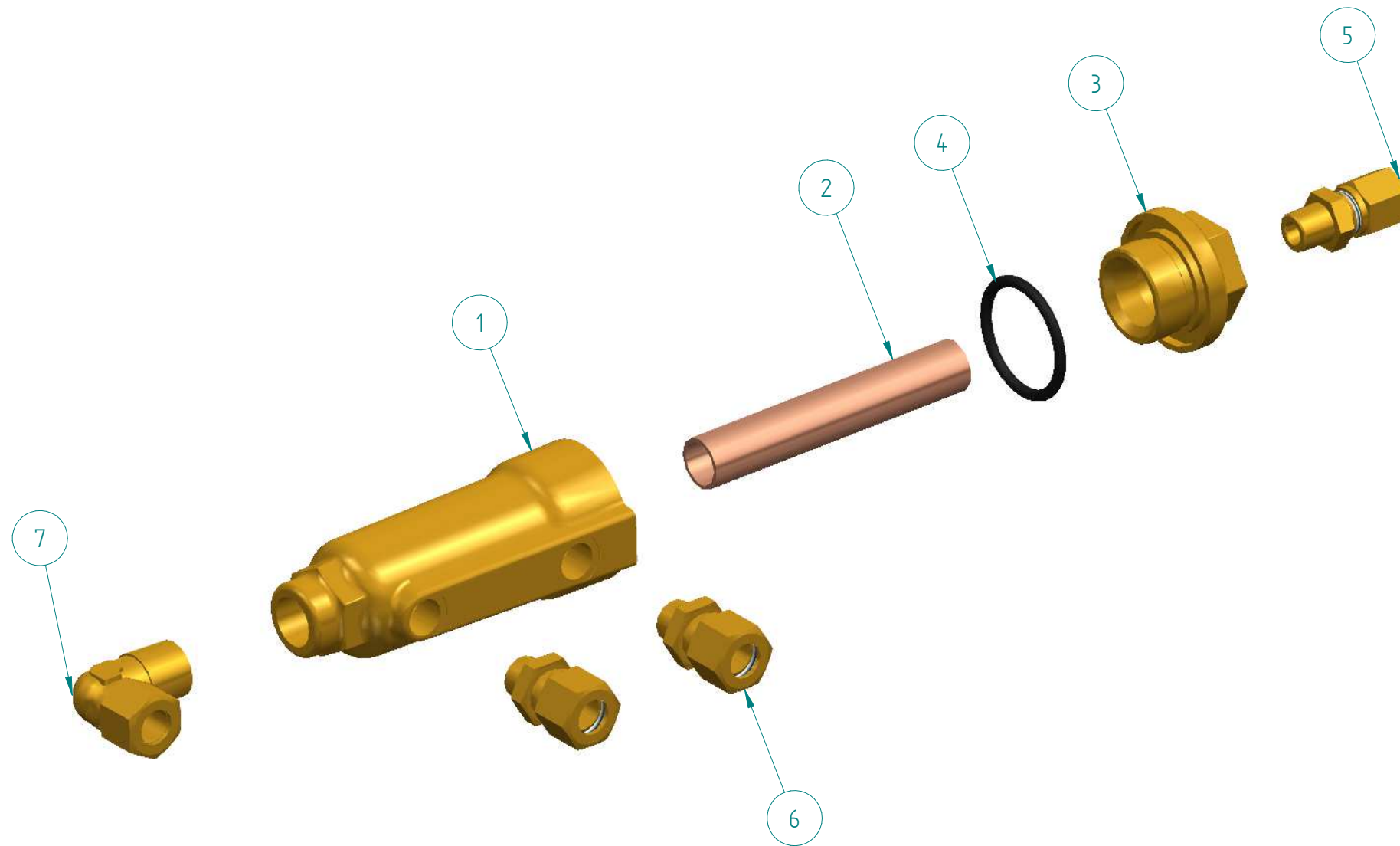


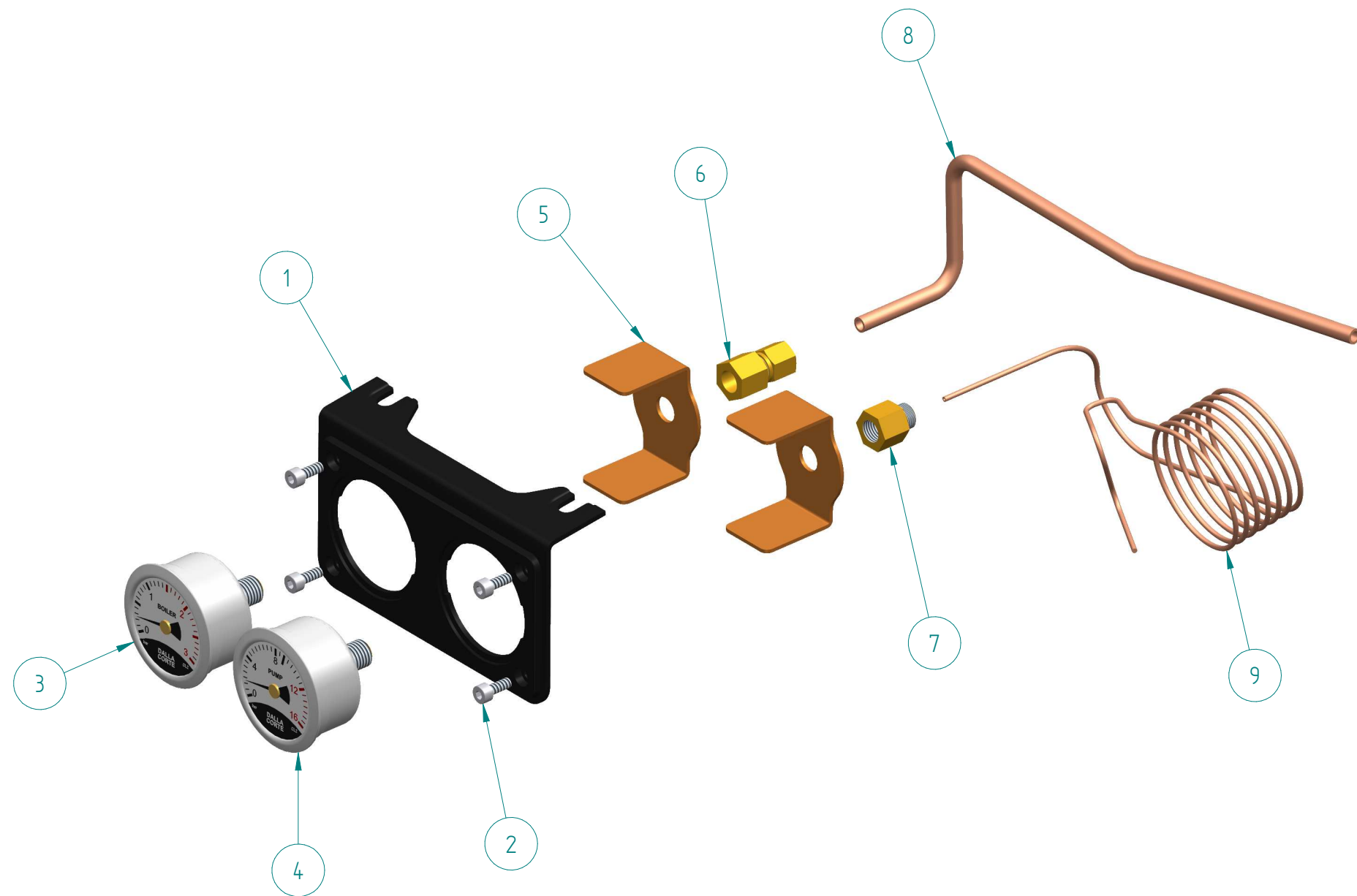
ITEM	CODE	DESCRIPTION	NOTE
	A-MC-1523	COMPLETE MANIFOLD 3GR	
	A-MC-1522 *	COMPLETE MANIFOLD 2GR	
1	B-MC-1093	MANIFOLD 3 GROUPS	
1a	B-MC-1092 *	MANIFOLD 2 GROUPS	
2	B-MC-0639	COMPLETE EXPANSION VALVE 1/4"	
3	B-MC-1146	COMPLETE CHECK VALVE 3/8" - 1/4"	
4	B-00-0022A	BALL TAP 1/4"	
5	B-00-0013A	STRAIGHT COUPLING 1/4" D6	
6	B-MC-0056	INOX FILTER D8 x 2	
7	B-00-0179A	CONICAL NIPPLE 1/8" MM	
8	B-00-0142A	EXTENSION MF 1/4" 444	
9	A-MC-1518	MANUAL FLOW REGULATOR	
10	B-00-0018	REDUCTION 1/4" X 1/8"	
11	B-00-0012A	STRAIGHT COUPLING 1/8" D6	
12	B-MC-1591	TUBE FROM MFR TO FM	
13	A-MC-1521	COMPLETE FLOWMETER	See sheet 09

ITEM	CODE	DESCRIPTION	NOTE
	A-MC-1521	COMPLETE FLOWMETER	
1	B-00-0291	FLOWMETER D1.0	
2	B-00-0012A	STRAIGHT COUPLING 1/8" D6	
3	B-00-0130A	L-COUPLING 237 D6 1/8"	

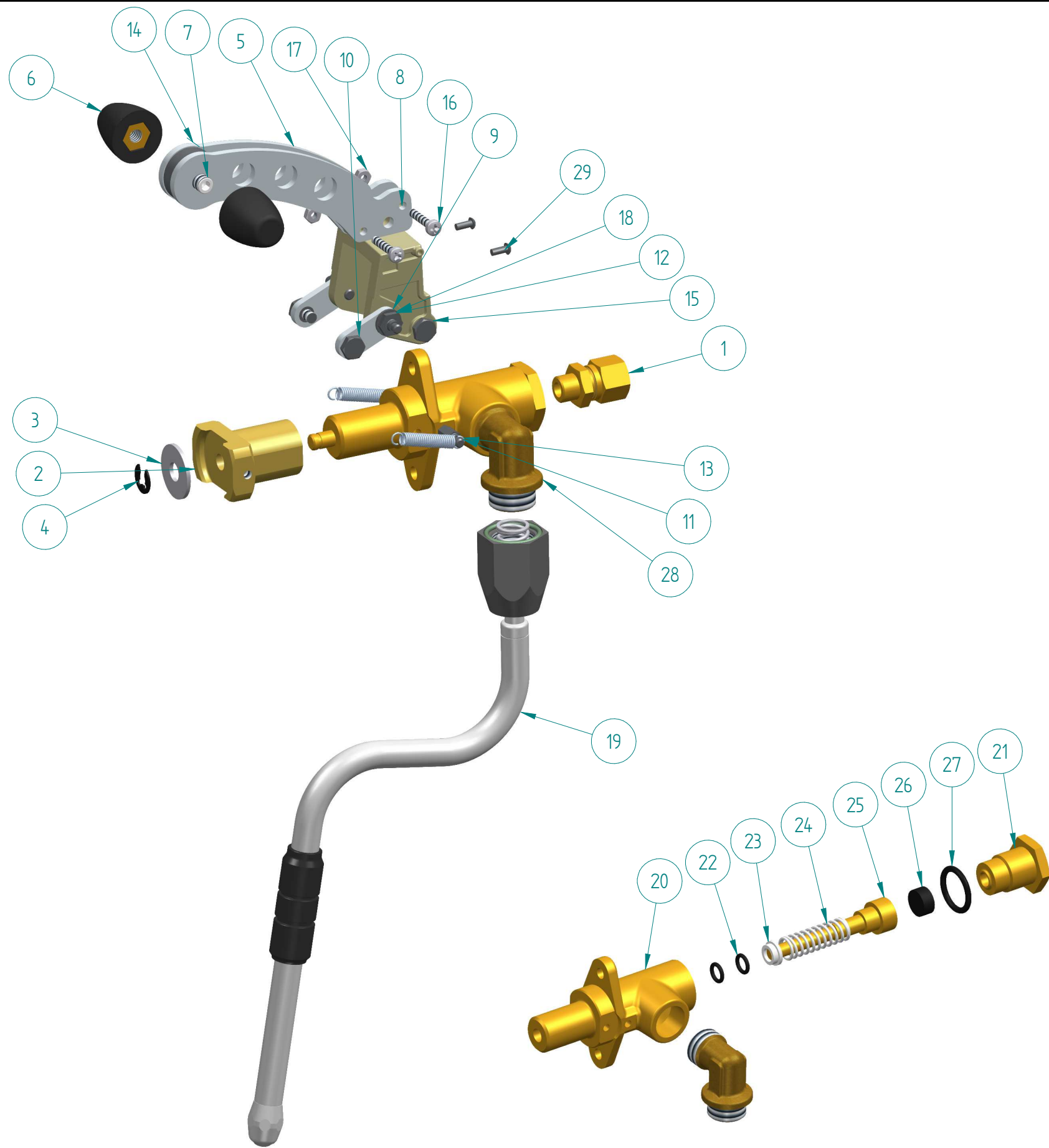


ITEM	CODE	DESCRIPTION	NOTE
	A-MC-1532	COMPLETE EXCHANGER	
1	B-MC-0079	EXCHANGER BODY	
2	B-MC-0081	EXCHANGER INTERNAL PIPE	
3	B-MC-0080	EXCHANGER PLUG	
4	B-00-0047	OR 3093/BS 119 FPM-FDA/70.vd	
5	B-00-0012A	STRAIGHT COUPLING 1/8" D6	
6	B-00-0101A	STRAIGHT COUPLING 1/8" D8	
7	B-00-0177A	L-COUPLING 1/4" D8	

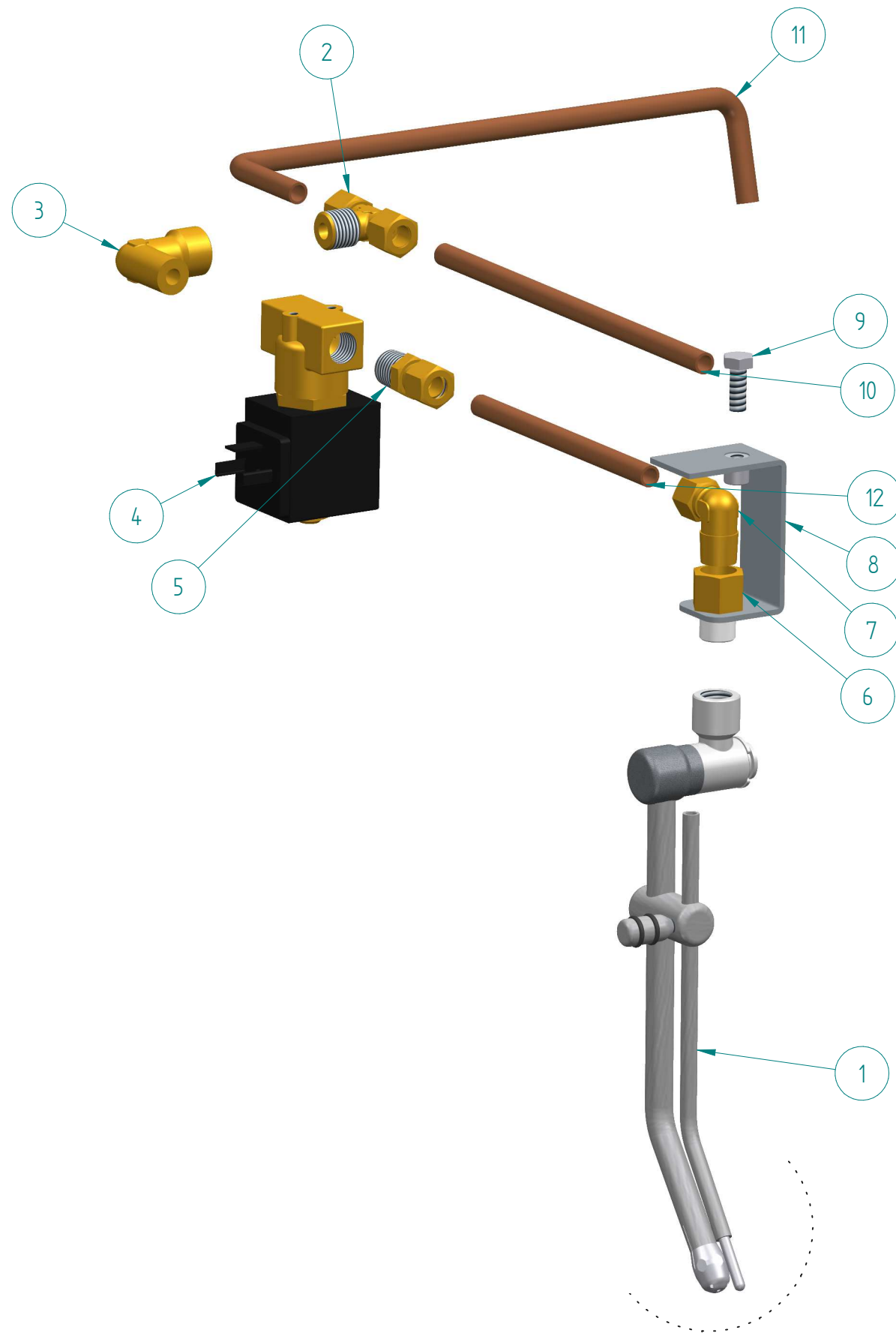




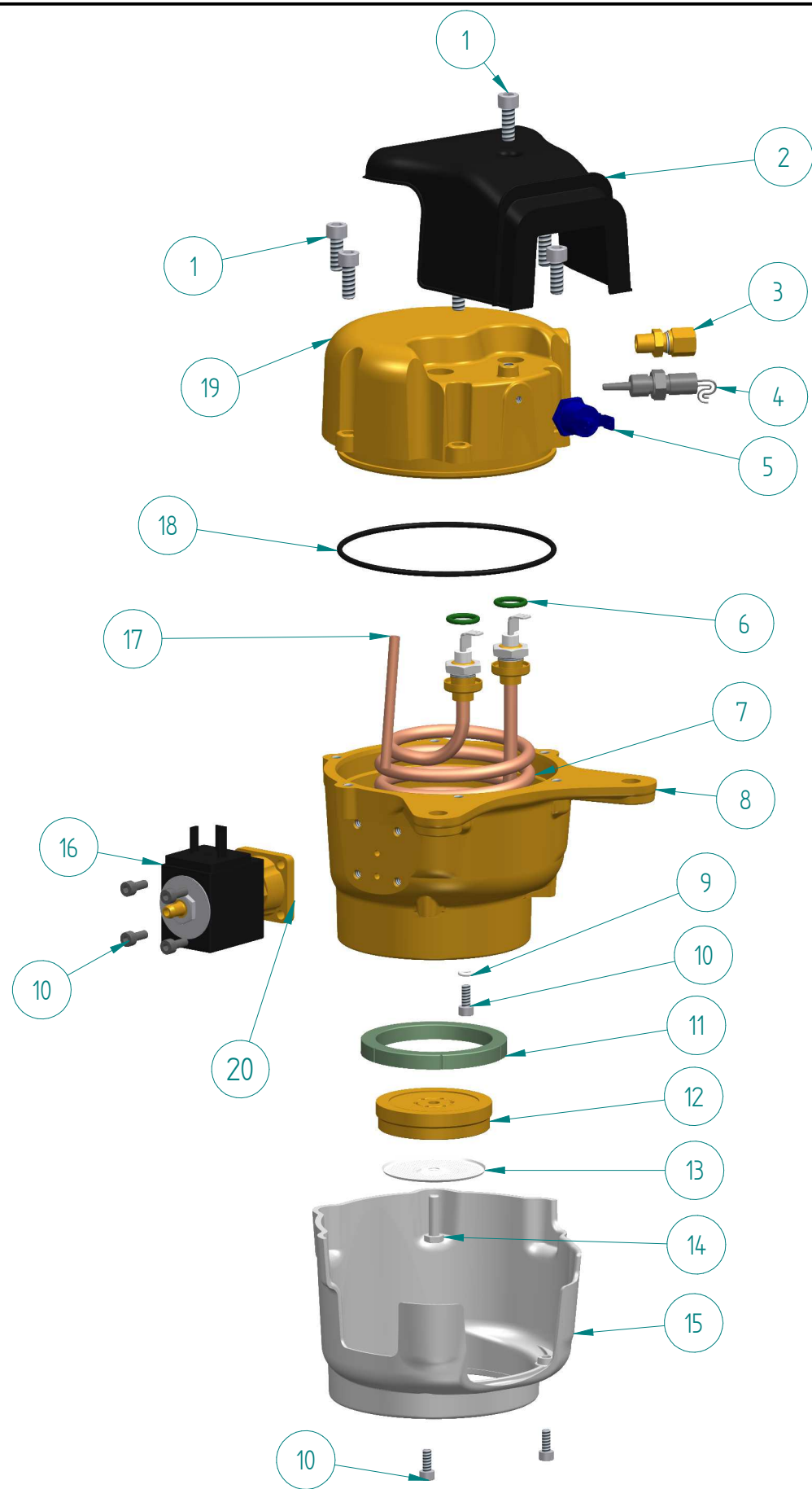
ITEM	CODE	DESCRIPTION	NOTE
	A-MC-0511D	PRESSURE GAUGE ASSEMBLY DARK	
	A-MC-0511W *	PRESSURE GAUGE ASSEMBLY WHITE	
1	B-MC-0569	PRESSURE GAUGE SUPPORT	
1a	B-MC-0569D	PRESSURE GAUGE SUPPORT DARK	
1b	B-MC-0569W	PRESSURE GAUGE SUPPORT WHITE	
2	B-00-0110	SCREW TCEI A2 M4x10 DIN912	
3	B-MC-1579	BOILER MANOMETER MY18	
4	B-MC-1580	PUMP MANOMETER MY18	
5	B-MC-1105	PRESSURE GAUGE U-CLAMP	
6	B-00-0134A	STRAIGHT COUPLING 1/8" D6	
7	B-00-0187A	EXTENSION 1/8" MF	
8	B-MC-1098	BOILER - PRESSURE GAUGE PIPE	
9	B-MC-0071	WATER PRESSURE GAUGE PIPE	



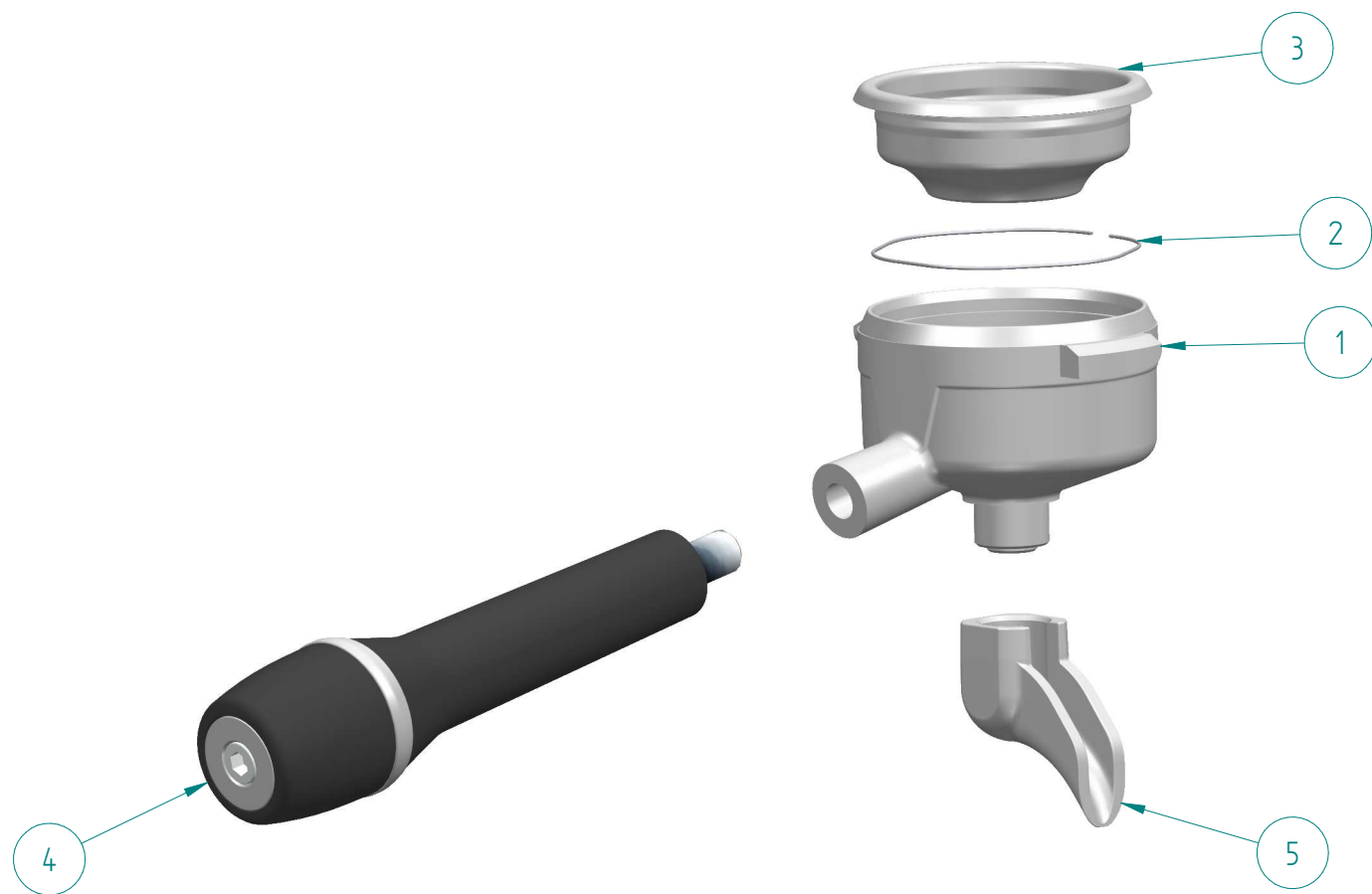
ITEM	CODE	DESCRIPTION	NOTE
	A-MC-1509	LEVER STEAM TAP ASSEMBLY RIGHT	
	A-MC-1508 *	LEVER STEAM TAP ASSEMBLY LEFT	
1	B-00-0101A	STRAIGHT COUPLING 1/8" D8	
2	B-MC-1529	STEAM TAP SHAFT BUSHING	
3	B-00-0243	WASHER A2 DIN 9021 M6	
4	B-00-0161	RETAINING RING D5	
5	B-MC-1545	STEAM TAP LEVER ARM	
6	B-MC-1546	STEAM TAP LEVER KNOB	
6a	B-MC-1546-0 *	STEAM TAP LEVER KNOB OAK	
6b	B-MC-1546-WN *	STEAM TAP LEVER KNOB WALNUT	
7	B-00-0299	GRUB SCREW M6x16 DIN916	
8	B-MC-1528	STEAM TAP LEVER	
9	B-MC-1530	STEAM TAP BOOMERANG SHACKLE	
10	B-MC-1544	SHOULDER SCREW BOLT	
11	B-MC-1533	FIXED SPRING PIN	
12	B-MC-1542	MOVING SPRING PIN	
13	B-00-0361	STEAM LEVER MOVING SPRING	
14	B-MC-1531	LEVER SPACER	
15	B-MC-1532	LEVER FULCRUM PIN BOLT	
16	B-00-0192	SCREW TC+ A2 M3x16 DIN7985	
17	B-00-0135	NUT M3 UNI5588	
18	B-00-0369	WASHER M5 DIN125	
19	A-MC-1063	STEAM PIPE C/W CHROME NUT	
19a	A-MC-1511 *	STEAM PIPE U-CAN TOUCH	
20	B-MC-1522	LEVER TAP BODY	NOT ORDINABLE
21	B-MC-0532A	STEAM TAP COUNTER-BODY	NOT ORDINABLE
22	B-00-0032	OR 5.7 x 1.9 VITON	
23	B-MC-0110	SEAL RING	NOT ORDINABLE
24	B-MC-0111	STEAM TAP SPRING	NOT ORDINABLE
25	B-MC-1523	STEAM TAP SHAFT	NOT ORDINABLE
26	B-MC-0112	STEAM TAP SHUTTER GASKET	
27	B-00-0033	OR 121	
28	B-MC-0533	STEAM TAP 90° FITTING	
29	B-00-0378	SPHERICAL HEAD PIN A2 2,5x6	



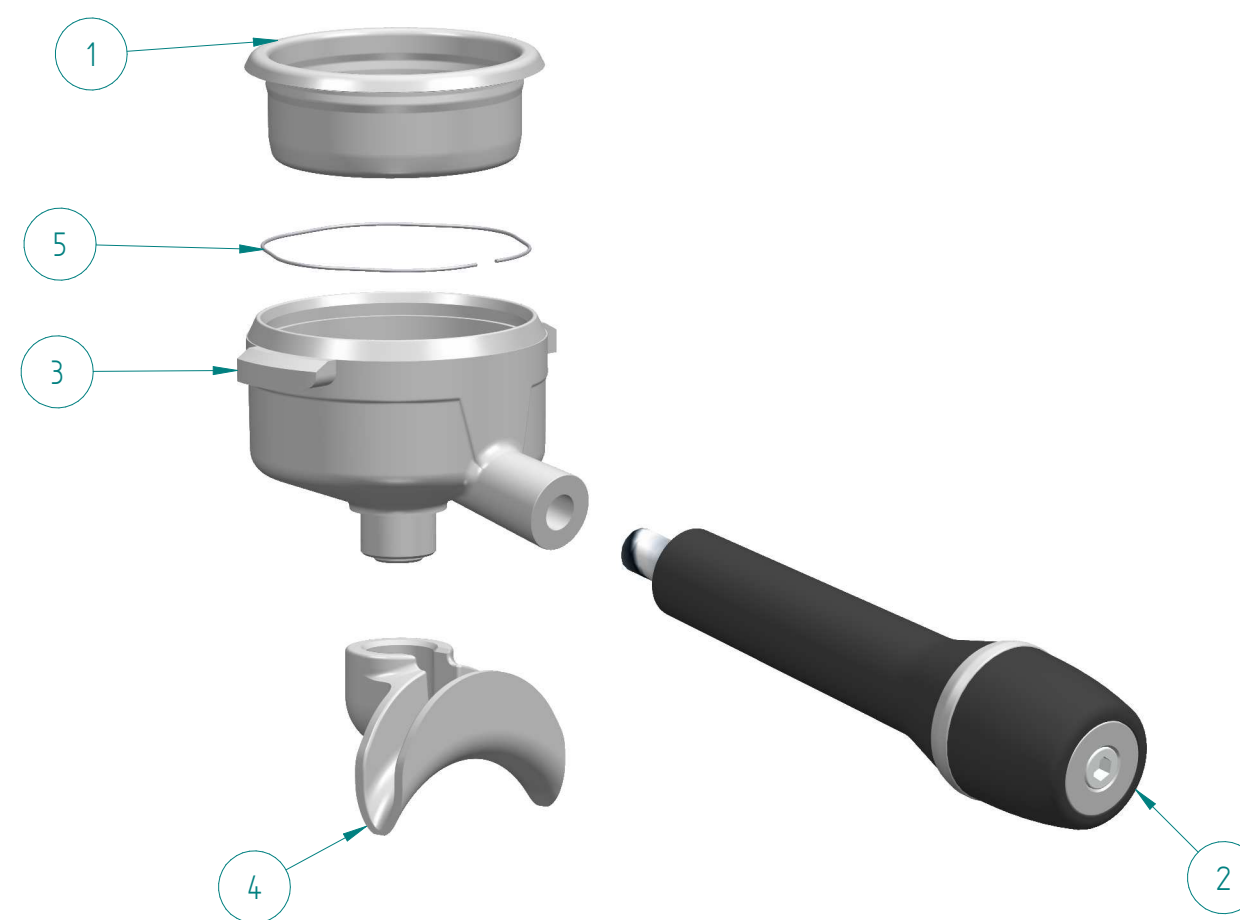
ITEM	CODE	DESCRIPTION	NOTE
	K-0183	KIT MCS XT	
1	K-0057	MCS (MILK CONTROL SYSTEM)	
2	B-00-0157A	T-COUPLING D8 1/4"	
3	B-00-0158A	L-COUPLING MF 1/4"	
4	B-00-0156	SOLENOID VALVE 2-WAY 24V	
5	B-00-0015A	STRAIGHT COUPLING 1/4" D8	
6	B-00-0142A	EXTENSION MF 1/4" 444	
7	B-00-0177A	L-COUPLING 1/4" D8	
8	B-MC-1603	MCS SUPPORT BRACKET	
9	B-00-0103	SCREW TE 8.8 M6x16 DIN933	
10	B-MC-1601	MCS PIPE 2ND SECTION	
11	B-MC-1600	MCS PIPE 1ST SECTION	
12	B-MC-1602	MCS PIPE 3RD SECTION	
13	B-MC-0495	MCS SPRAYER MY 13 W/ OR	
14	A-MC-1159CA	MCS COMPLETE TEMPERATURE PROBE	



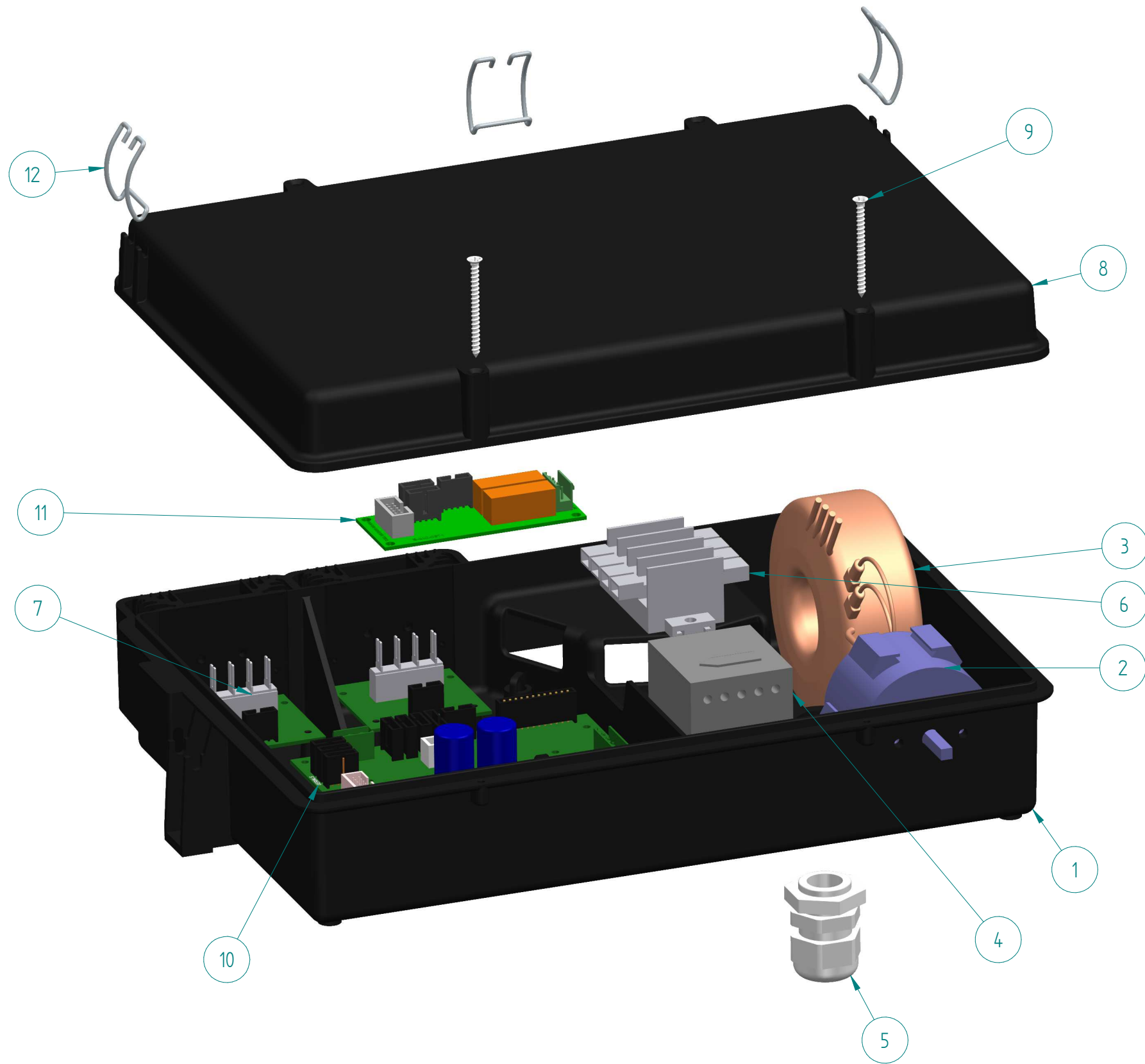
ITEM	CODE	DESCRIPTION	NOTE
	A-MC-1008GZ	RAW ASSEMBLED GROUPHEAD	
1	B-00-0109	SCREW TCEI A2 M6x16 DIN912	
2	B-MC-0211	GROUP HEATING ELEMENT PROTECTION	SUPPLIED SEPARATELY
3	B-00-0012A	STRAIGHT COUPLING 1/8" D6	
4	B-MC-1132	TEMPERATURE PROBE PT1000 1/8"	
5	B-00-0024	SAFETY THERMOSTAT 1F 16A	
6	B-00-0046A	OR 11,30 x 2,40 FPM-FDA/70.vd	
7	B-MC-0003	GROUP HEATING ELEMENT 230V 850W	
8	B-MC-0034	GROUP BODY	
9	B-00-0100	OR 2015/BS 007 3,68x1,78	
10	B-00-0110	SCREW TCEI A2 M4x10 DIN912	
11	B-MC-0128	GASKET H7 70/75 SH	
11a	B-MC-0468 *	GASKET H7.7 70/75 SH	
11b	B-MC-0269 *	GASKET DEPTH TH. 0.5	
11c	B-MC-0470 *	GASKET H6.5 68/54	
11d	B-MC-0714 *	GASKET H7 85 SH HNBR NERO	
12	B-MC-0458	SHOWER HOLDER H12.5	
12a	B-MC-0038 *	SHOWER HOLDER H14	
12b	B-MC-0291 *	SHOWER HOLDER H10	
13	B-MC-0039	SHOWER	
13a	B-MC-0039A *	NANOTECH. TREATMENT SHOWER	
13b	B-MC-0461 *	SCREEN SHOWER	
14	B-00-0054	SCREW TE A2 M5X20 DIN933	FOR SHOWER HOLDER H12.5/14
14a	B-00-0205 *	SCREW TE A2 M5X16 DIN933	FOR SHOWER HOLDER H10
15	B-MC-0668	GROUP BODY COVER	SUPPLIED SEPARATELY
16	B-00-0025	SOLENOID VALVE 3-WAY 24V	
17	B-MC-0091	GROUP INNER PIPE	
18	B-00-0034	OR 3375/BS 154 94,92x2,62	
19	B-MC-1133	GROUP TOP COVER	
20	B-00-0036	OR 105 VITON SOLENOID VALVE GR	



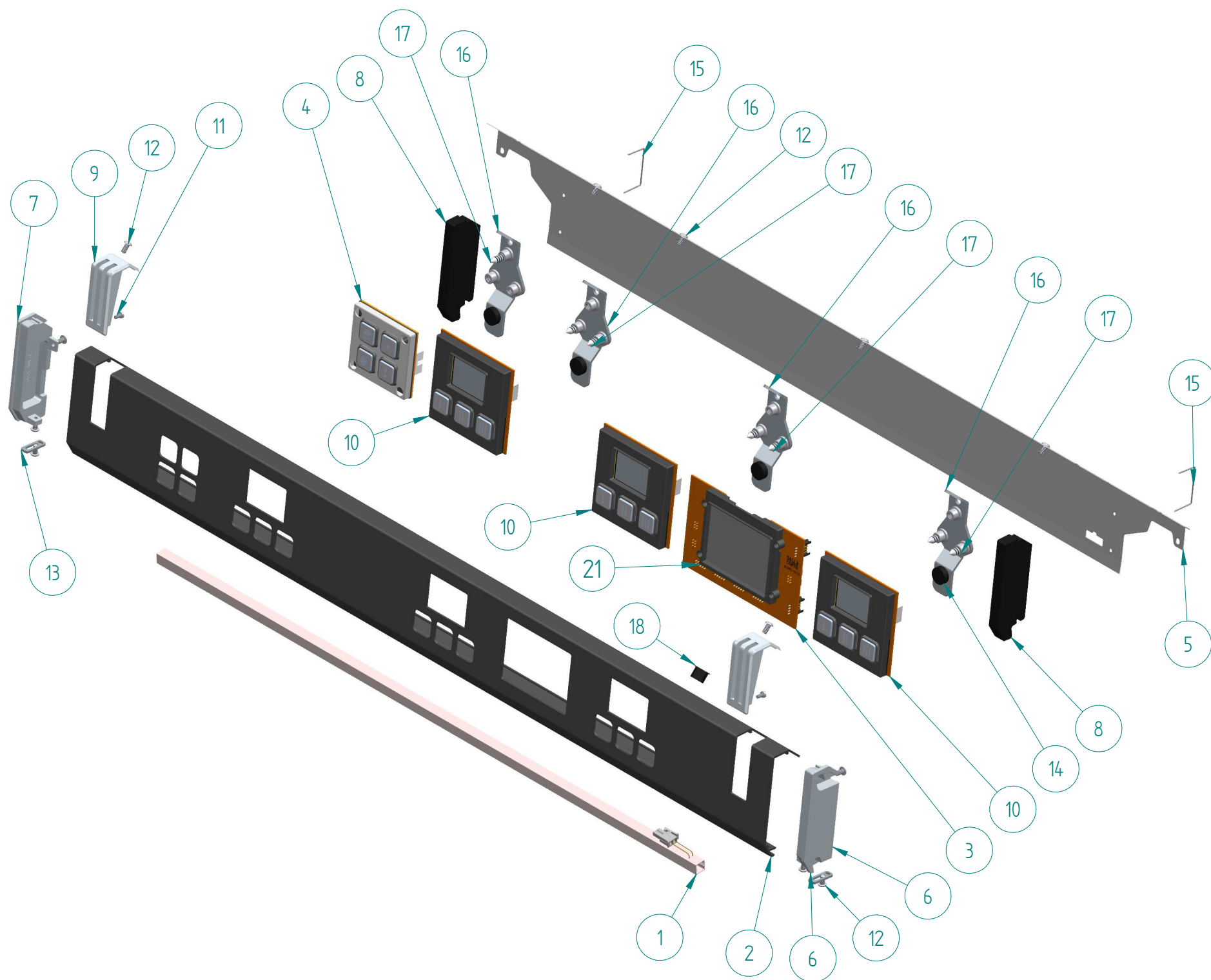
ITEM	CODE	DESCRIPTION	NOTE
	A-MC-1028A	1-CUP PORTAFILTER	
	A-MC-1530-0 *	1-CUP PORTAFILTER OAK	
	A-MC-1530-WN *	1-CUP PORTAFILTER WALNUT	
1	B-MC-1110	PORTAFILTER BODY D54	
2	B-MC-0060	PORTAFILTER SPRING 1.0	
3	B-MC-0040	1 CUP FILTER H25 (7-9gr)	
3a	B-MC-0271 *	1 CUP FILTER H23 (6-7gr)	
3b	B-MC-0686 *	1 CUP FILTER H27 (9-10gr)	
3c	B-MC-0224	BLIND FILTER	
4	B-MC-1111	FILTER HOLDER KNOB	
5	B-MC-0077	CHROMED 1-SHOT SPOUT	



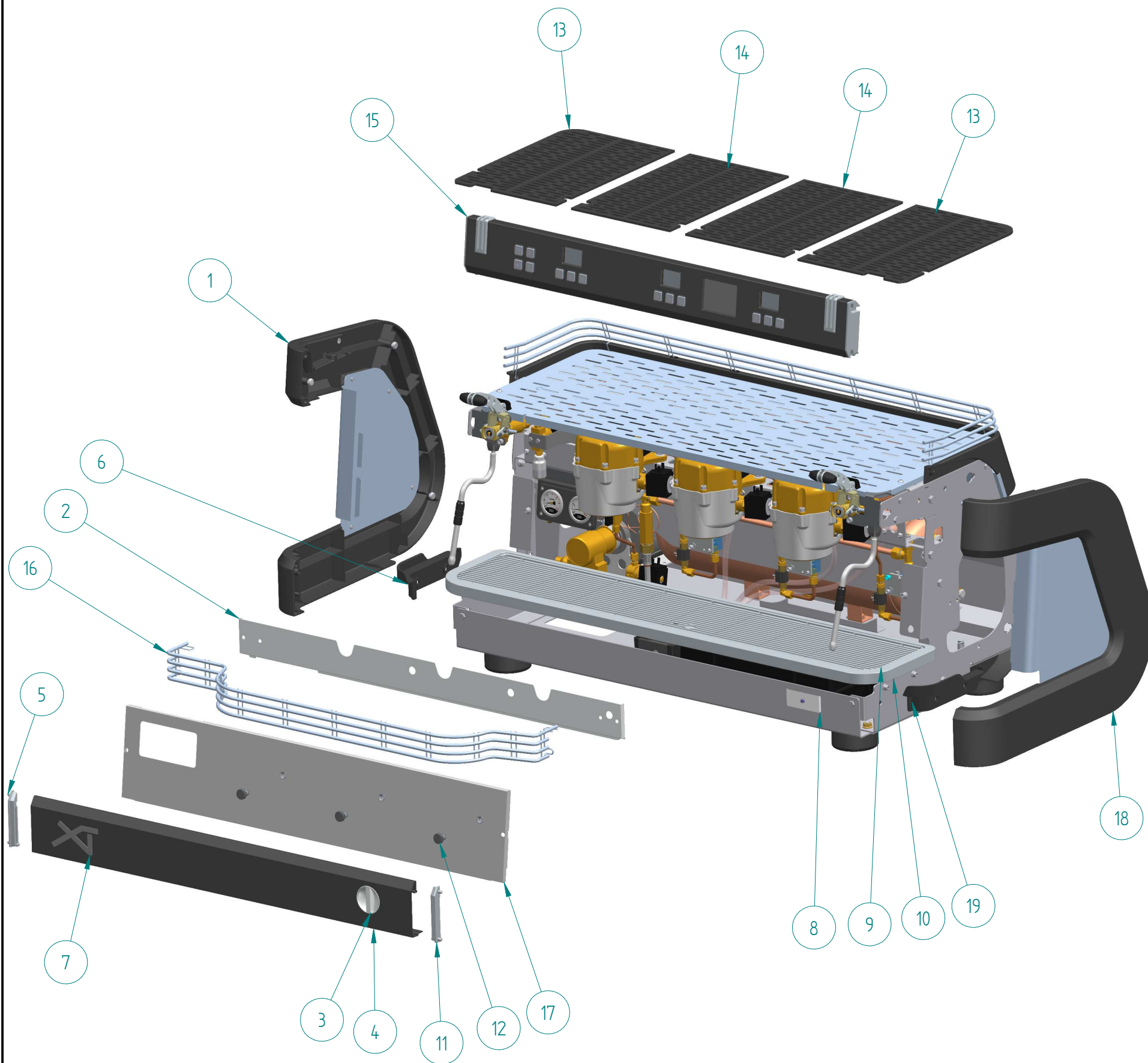
ITEM	CODE	DESCRIPTION	NOTE
	A-MC-1027A	2-CUP PORTAFILTER	
	A-MC-1529-0 *	2-CUP PORTAFILTER OAK	
	A-MC-1529-WN *	2-CUP PORTAFILTER WALNUT	
1	B-MC-0409	2 CUP FILTER H24 (<14gr)	
1a	B-MC-0041 *	2 CUP FILTER H26 (14-15gr)	
1b	B-MC-0394 *	2 CUP FILTER H28 (15-18gr)	
1c	B-MC-0432 *	2 CUP FILTER H32 (21gr-)	
1d	B-MC-0729 *	2 CUP FILTER H30 (18-21gr)	
1f	B-MC-0224 *	BLIND FILTER	
2	B-MC-1111	FILTER HOLDER KNOB	
3	B-MC-1110	PORTAFILTER BODY D54	
4	B-MC-0078	CHROMED 2-SHOT SPOUT	
5	B-MC-0060	PORTAFILTER SPRING 1.0	



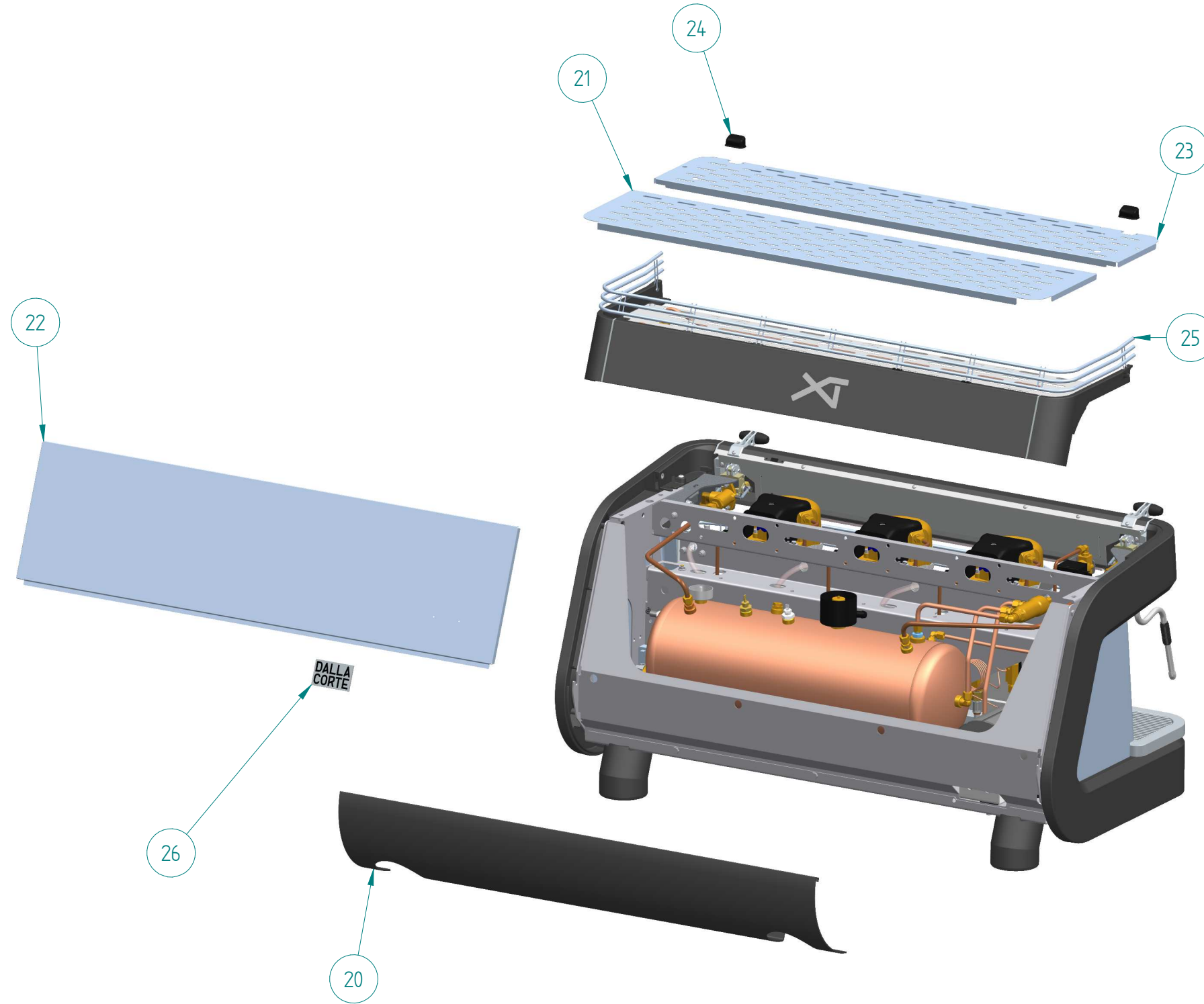
ITEM	CODE	DESCRIPTION	NOTE
1	B-MC-0015	ELECTRIC BOX	
2	B-00-0002	SWITCH 4P	
3	B-00-0169	TRANSFORMER 230V - 24V 95VA/12V 15VA	
4	B-00-0004	CONTACTOR 4P 25A 400V B230V	
5	B-00-0001	CABLE GLAND PG16	
6	A-MC-0054	FASTON 4-POLE 6.3 TERM. BOARD	
7	A-MC-1039	TRIAC UNIT	
8	B-MC-0016	ELECTRIC BOX COVER	
9	B-00-0116	SELF-TAPPING SC.3.5x45 DIN7982	
10	B-MC-0570	MANAG. ELECTRIC BOARD	
11	B-MC-0571	3rd+4th GR EXPANSION BOARD	
12	B-MC-1175	ELECTRIC BOX CLOSING SPRING	
13	B-MC-0656 **	3PH+N+T POWER CABLE	
13a	B-MC-0657 **	1PH. POWER CABLE	
14	B-MC-1565 **	ELECTRIC BOX WIRING 2GR	
14a	B-MC-1566 **	ELECTRIC BOX WIRING 3GR	
15	B-MC-1583 **	WIRING ACCESSORIES 2GR	
15a	B-MC-1584 **	WIRING ACCESSORIES 3GR	



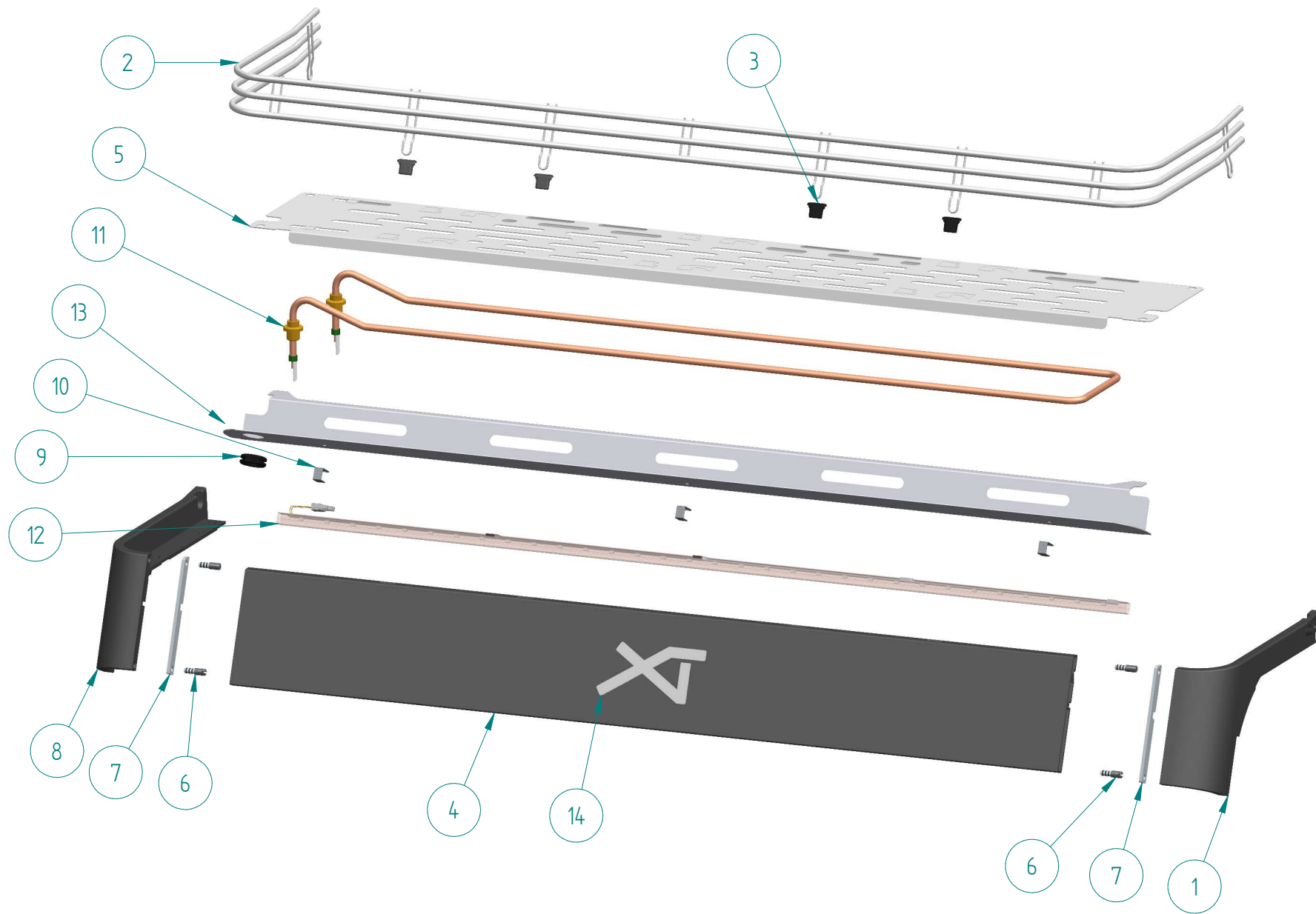
ITEM	CODE	DESCRIPTION	NOTE
	A-MC-1505W *	COMPLETE UPPER FRONT 3GR WHITE	
	A-MC-1505D *	COMPLETE UPPER FRONT 3GR DARK	
	A-MC-1504D *	COMPLETE UPPER FRONT 2GR DARK	
	A-MC-1504W *	COMPLETE UPPER FRONT 2GR WHITE	
1	A-MC-1048	COMPLETE LED BAR L600	FOR 3GR UPPER FRONT
1a	A-MC-1047	COMPLETE LED BAR L400	FOR 2GR UPPER FRONT
2	B-MC-1520D	FRONT PANEL 3GR DARK	
2a	B-MC-1520W *	FRONT PANEL 3GR WHITE	
2b	B-MC-1519D *	FRONT PANEL 2GR DARK	
2c	B-MC-1519W *	FRONT PANEL 2GR WHITE	
3	B-MC-1513	TOUCH DISPLAY	
4	A-MC-1512	PUSHBUTTON SET	
5	B-MC-1512	FRONTAL CLOSING SHEET 3GR	
5a	B-MC-1511	FRONTAL CLOSING SHEET 2GR	
6	B-MC-1514	FRONTAL PROFILE RIGHT	
7	B-MC-1515	FRONTAL PROFILE LEFT	
8	B-MC-1516	UPPER FRONT GASKET	
9	B-MC-1517	HOLLOW LEVER FINISH	
10	A-MC-1503	GROUP BOARD ASSEMBLY	
11	B-00-0182	SCREW TC+ M3x6 DIN7985	
12	B-00-0295	SCREW TBEI A2 M4x8 UNI7380	
13	B-MC-1574	FRONT PANEL SAFETY LOCK	
14	B-MC-0123	GASKET D15	
15	B-MC-1575	NEOPRENE FIXING SPRING	
16	B-MC-1562	BOARD ASSEMBLY SUPPORT	
17	B-00-0363	GRUB SCREW A2 M6x20 DIN914	
18	B-00-0381	USB PLUG	
19	B-MC-1518	TOUCH DISPLAY FRAME	
20	B-MC-1582 **	WIRING UPPER FRONT 3GR	
20a	B-MC-1581 **	WIRING UPPER FRONT 2GR	



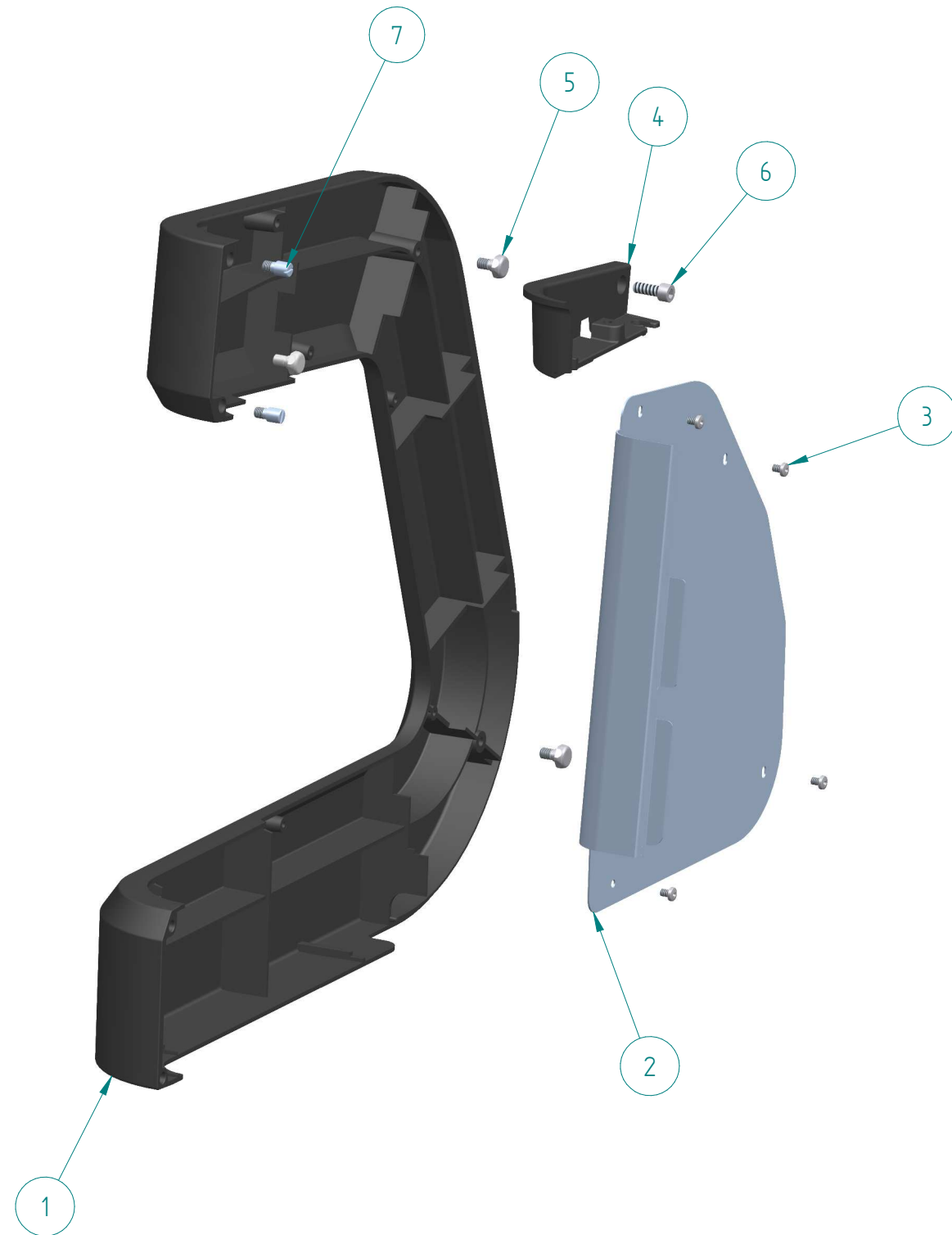
ITEM	CODE	DESCRIPTION	NOTE
1	-	LEFT SIDE BODY COMPLETE	See sheet 21
2	B-MC-1558	FRONT TOP PANEL 3GR INOX	
2a	B-MC-1558D *	FRONT TOP PANEL 3GR DARK	
2b	B-MC-1558W *	FRONT TOP PANEL 3GR WHITE	
2c	B-MC-1557 *	FRONT TOP PANEL 2GR INOX	
2d	B-MC-1557D *	FRONT TOP PANEL 2GR DARK	
2f	B-MC-1557W *	FRONT TOP PANEL 2GR WHITE	
3	B-MC-0597	MAIN SWITCH KNOB	
3a	B-MC-0597D *	MAIN SWITCH KNOB DARK	
3b	B-MC-0597W *	MAIN SWITCH KNOB WHITE	
4	B-MC-1550D	FRONT BOTTOM 3GR DARK	
4a	B-MC-1550W *	FRONT BOTTOM 3GR WHITE	
4b	B-MC-1549D *	FRONT BOTTOM 2GR DARK	
4c	B-MC-1549W *	FRONT BOTTOM 2GR WHITE	
5	B-MC-1548	PROFILE FRONT BOTTOM LEFT	
6	B-MC-1036	TRAY SUPPORT LEFT	
7	B-MC-1599	XT LOGO	
8	B-MC-1136	SWITCH KNOB SPRING	
9	B-MC-1032	TRAY GRID 3 GROUPS	
9a	B-MC-1031 *	TRAY GRID 2 GROUPS	
10	B-MC-1029	TRAY 3 GROUPS	
10a	B-MC-1028 *	TRAY 2 GROUPS	
11	B-MC-1547	PROFILE FRONT BOTTOM RIGHT	
12	B-MC-1598	MFR PLUG M10	
13	B-MC-1578	CUP GRID LATERAL SECTION	
14	B-MC-1577	CUP GRID CENTRAL SECTION	
15	-	COMPLETE UPPER FRONT 3GR	See sheet 17
15a	-	COMPLETE UPPER FRONT 2GR	See sheet 17
16	B-MC-1535	GROUPS PROTECTION GRID 3GR	
16a	B-MC-1534 *	GROUPS PROTECTION GRID 2GR	
17	B-MC-1556	FRONT PANEL 3GR INOX	
17a	B-MC-1556D *	FRONT PANEL 3GR DARK	
17b	B-MC-1556W *	FRONT PANEL 3GR WHITE	
17c	K-0189-0 *	FRONT PANELS KIT 3GR OAK	FRONT+RIGHT+LEFT PANELS
17d	K-0189-WN *	FRONT PANELS KIT 3GR WALNUT	FRONT+RIGHT+LEFT PANELS
17f	B-MC-1555 *	FRONT PANEL 2GR INOX	
17g	B-MC-1555D *	FRONT PANEL 2GR DARK	
17h	B-MC-1555W *	FRONT PANEL 2GR WHITE	
17i	K-0188-0 *	FRONT PANELS KIT 2GR OAK	FRONT+RIGHT+LEFT PANELS
17l	K-0188-WN *	FRONT PANELS KIT 2GR WALNUT	FRONT+RIGHT+LEFT PANELS
18	-	RIGHT SIDE BODY COMPLETE	See sheet 22
19	B-MC-1035	TRAY SUPPORT RIGHT	



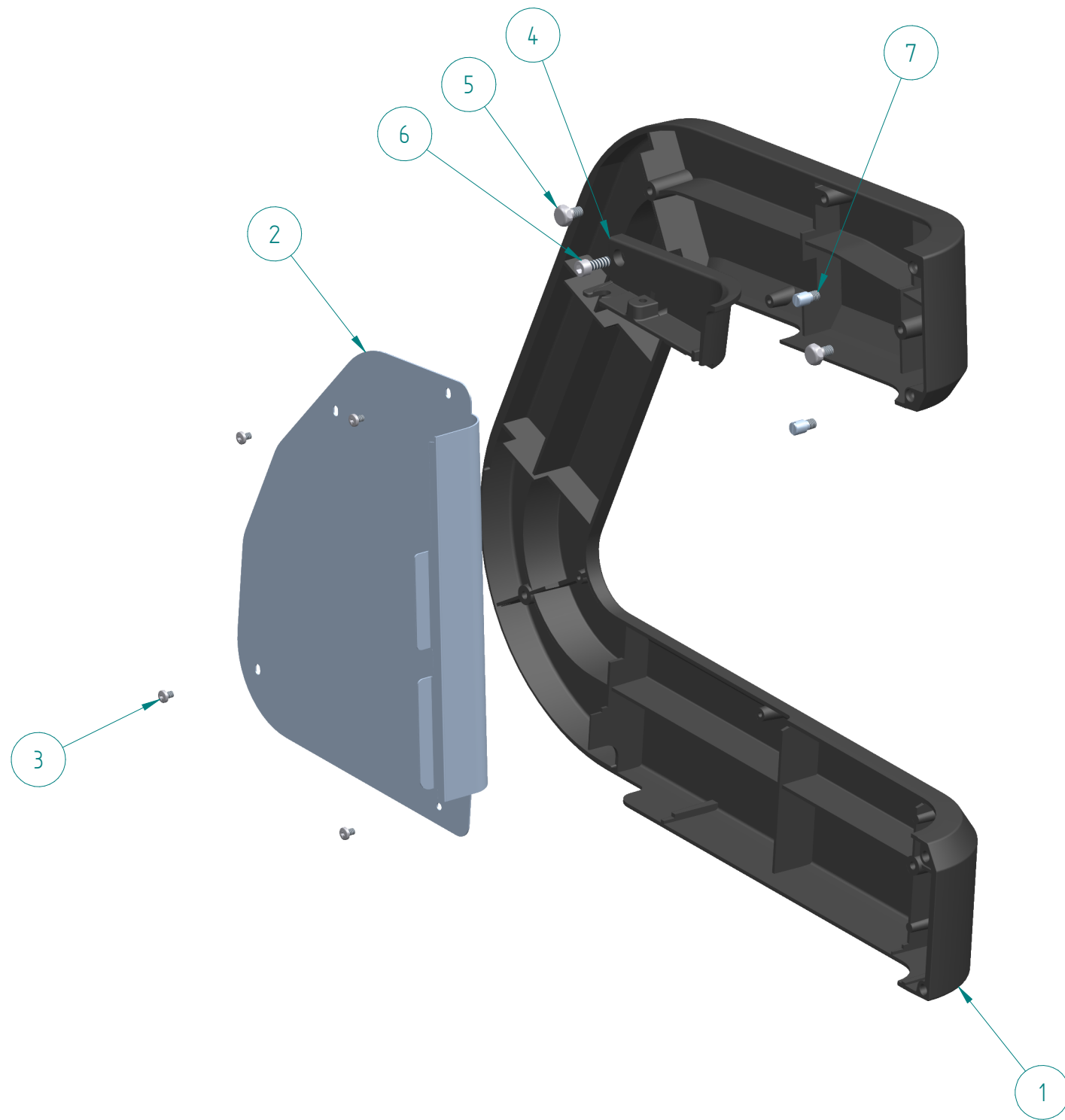
ITEM	CODE	DESCRIPTION	NOTE
20	B-MC-1568D	REAR PANEL 3GR DARK	
20a	B-MC-1568W *	REAR PANEL 3GR WHITE	
20b	B-MC-1567D *	REAR PANEL 2GR DARK	
20c	B-MC-1567W *	REAR PANEL 2GR WHITE	
21	B-MC-1060	REAR TOP GRID 3GR	
21a	B-MC-1059 *	REAR TOP GRID 2GR	
22	B-MC-1554	UPPER REAR PANEL 3GR INOX	
22a	B-MC-1554D *	UPPER REAR PANEL 3GR DARK	
22b	B-MC-1554W *	UPPER REAR PANEL 3GR WHITE	
22c	B-MC-1554-0 *	UPPER REAR PANEL 3GR OAK	
22d	B-MC-1554-WN *	UPPER REAR PANEL 3GR WALNUT	
22f	B-MC-1553 *	UPPER REAR PANEL 2GR INOX	
22h	B-MC-1553D *	UPPER REAR PANEL 2GR DARK	
22i	B-MC-1553W *	UPPER REAR PANEL 2GR WHITE	
22l	B-MC-1553-0 *	UPPER REAR PANEL 2GR OAK	
22m	B-MC-1553-WN *	UPPER REAR PANEL 2GR WALNUT	
23	B-MC-1560	FRONT TOP GRID 3GR	
23a	B-MC-1559 *	FRONT TOP GRID 2GR	
24	B-MC-1563	LEVER COVER	
25	-	CUP WARMING UNIT	See sheet 20
26	B-MC-0697	DALLA CORTE LOGO 71 x 43.5	



ITEM	CODE	DESCRIPTION	NOTE
1	B-MC-1571D	SPOILER LEFT DARK	
1a	B-MC-1571W *	SPOILER LEFT WHITE	
2	B-MC-1537	RETAINER CUPS 3GR	
2a	B-MC-1536 *	RETAINER CUPS 2GR	
3	B-MC-1148	GRID GUIDE INSERT	
4	B-MC-1541D	CENTRAL SPOILER 3GR DARK	
4a	B-MC-1541W *	CENTRAL SPOILER 3GR WHITE	
4b	B-MC-1540D *	CENTRAL SPOILER 2GR DARK	
4c	B-MC-1540W *	CENTRAL SPOILER 2GR WHITE	
5	B-MC-1012	CUP WARMER PLATE 3GR	
5a	B-MC-1011 *	CUP WARMER PLATE 2GR	
6	B-MC-1573	SPOILER SCREW PIN	
7	B-MC-1572	SPOILER PROFILE	
8	B-MC-1570D	SPOILER RIGHT DARK	
8a	B-MC-1570W *	SPOILER RIGHT WHITE	
9	B-MC-0195	GROMMET PG16	
10	B-MC-1332	LED TUBE SUPPORT	
11	B-MC-0184	CUP WARMER RESISTANCE 150W	FOR 3 GROUPS
11a	B-MC-0030 *	CUP WARMER RESISTANCE 100W	FOR 2 GROUPS
12	A-MC-0530	COMPLETE LED BAR L800	FOR 3 GROUPS
12a	A-MC-0529 *	COMPLETE LED BAR L600	FOR 2 GROUPS
13	B-MC-1168	CLOSING SHEET PROFILE 3GR	
13a	B-MC-1167 *	CLOSING SHEET PROFILE 2GR	
14	B-MC-1599	XT LOGO	



ITEM	CODE	DESCRIPTION	NOTE
	A-MC-1538DD	LEFT SIDE BODY DYNAMIC DARK	
	A-MC-1538TD *	LEFT SIDE BODY TOTAL DARK	
	A-MC-1538DW *	LEFT SIDE BODY DYNAMIC WHITE	
	A-MC-1538TW *	LEFT SIDE BODY TOTAL WHITE	
1	B-MC-1552D	LEFT SIDE BODY DARK	
1a	B-MC-1552W *	LEFT SIDE BODY WHITE	
2	B-MC-1216	LEFT SIDE PANEL INOX	
2a	B-MC-1303 *	LEFT SIDE PANEL WHITE	
2b	B-MC-1006D *	LEFT SIDE PANEL DARK	
3	B-00-0111	SCREW TC+ A2 M4x6 DIN7985	
4	B-MC-1539D	LEFT SIDE FINISHING DARK	
4a	B-MC-1539W	LEFT SIDE FINISHING WHITE	
5	B-MC-0173	SIDE COUPLING SCREW	
6	B-00-0109	SCREW TCEI A2 M6x16 DIN912	
7	B-MC-1007	FRONT SUPPORT PIN	



ITEM	CODE	DESCRIPTION	NOTE
	A-MC-1539DD	RIGHT SIDE BODY DYNAMIC DARK	
	A-MC-1539TD *	RIGHT SIDE BODY TOTAL DARK	
	A-MC-1539DW *	RIGHT SIDE BODY DYNAMIC WHITE	
	A-MC-1539TW *	RIGHT SIDE BODY TOTAL WHITE	
1	B-MC-1551D	RIGHT SIDE BODY DARK	
1a	B-MC-1551W *	RIGHT SIDE BODY WHITE	
2	B-MC-1215	RIGHT SIDE PANEL INOX	
2a	B-MC-1302 *	RIGHT SIDE PANEL WHITE	
2b	B-MC-1005D *	RIGHT SIDE PANEL DARK	
3	B-00-0111	SCREW TC+ A2 M4x6 DIN7985	
4	B-MC-1538D	RIGHT SIDE FINISHING DARK	
4a	B-MC-1538W *	RIGHT SIDE FINISHING WHITE	
5	B-MC-0173	SIDE COUPLING SCREW	
6	B-00-0109	SCREW TCEI A2 M6x16 DIN912	
7	B-MC-1007	FRONT SUPPORT PIN	

ACCESSORIES



B-MC-0225

KEY FOR SHOWER SCREW



A-MC-1046

GROUP HANDLE SCASE
DEVISE



B-MC-0404

GROUP CLEANER BOX 120
TABLETS



B-MC-0478A

STAINLESS STEEL TAMPER
D 54,5

B-MC-0478A-0

STAINLESS STEEL TAMPER
D 54,5+OAK

B-MC-0478A-WN

STAINLESS STEEL TAMPER
D 54,5+WALNUT



B-MC-1171

NAKED FILTER HOLDER



A-PC-0001

COFFEE CALIBER



B-00-0045

BLACK SPIRAL DRAIN
PIPE (MT)



1-PC-083

TAMPING MAT



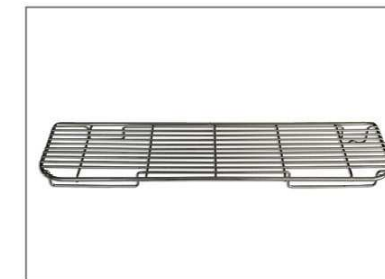
A-PC-0003

TAMPER D 54,5
WITH XT'S TOOL



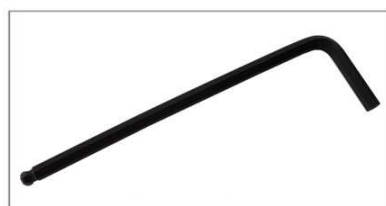
B-00-0029

FLEX WATER PIPE 3/8" L70



B-MC-1173

2 GROUPS RAISED LEVEL
DRIP TRAY GRILL



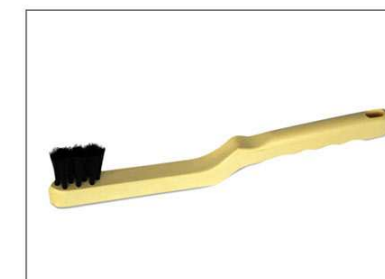
B-00-0382

ANGLED HEXAGON
KEY 4mm



B-00-0030

FLEX WATER PIPE 3/8" L150
WITH 1 PIPE-SHAPED
CONNECTION



B-MC-1174

3 GROUPS RAISED LEVEL
DRIP TRAY GRILL

B-MC-0194

BRUSH CLEANING
SHOWERS